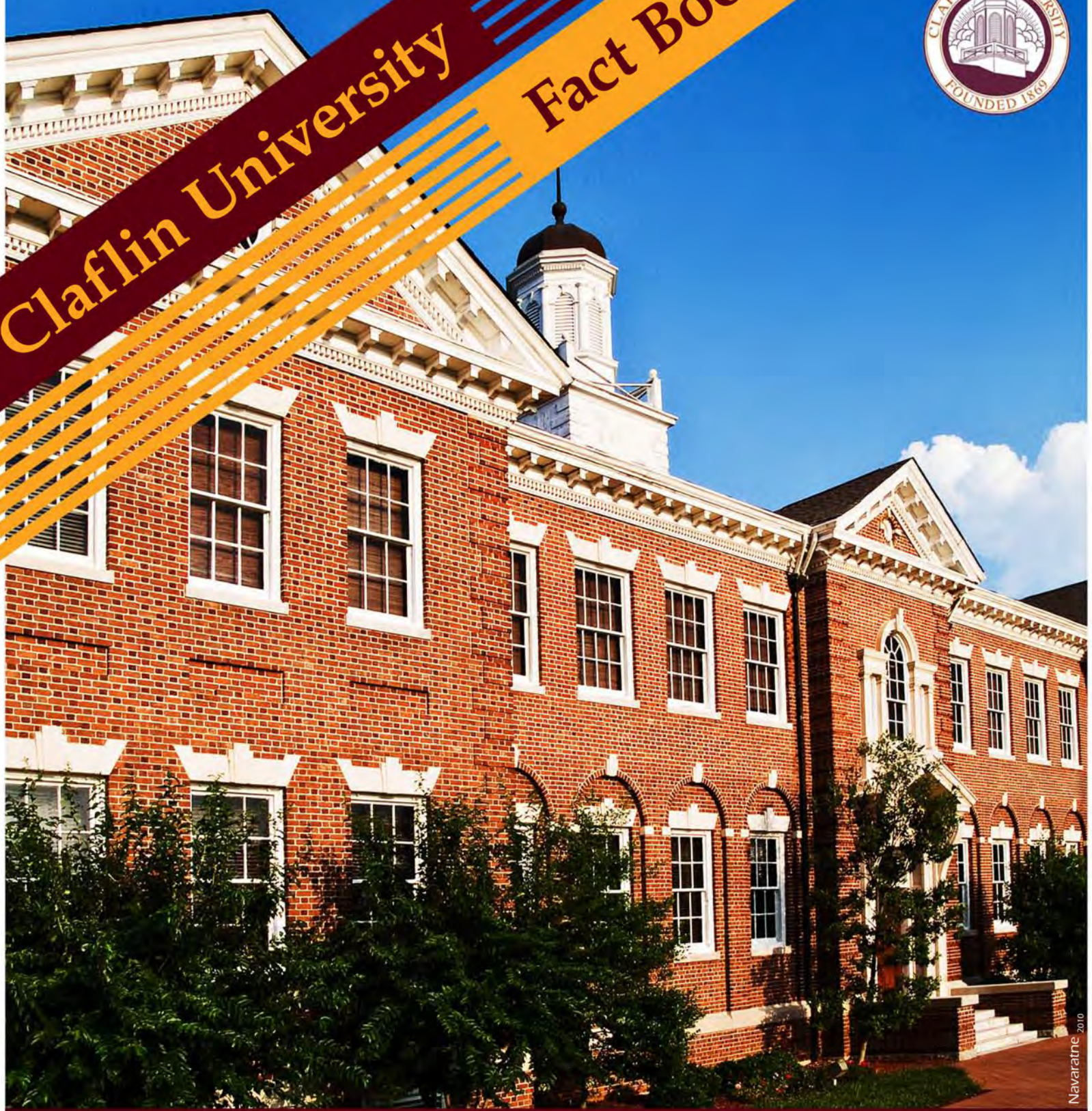


# Claflin University Fact Book



Division of Planning, Assessment  
& Information Services  
Institutional Research

# 2010

Navaratne 2010

# TABLE OF CONTENTS

<b>SECTION I GENERAL INFORMATION</b> .....	<b>2</b>
<b>INTRODUCTION</b> .....	<b>2</b>
<b>VISION STATEMENT</b> .....	<b>3</b>
<b>MISSION STATEMENT</b> .....	<b>3</b>
<b>CLAFLIN UNIVERSITY GUIDING PRINCIPLES</b> .....	<b>4</b>
<b>STRATEGIC GOALS</b> .....	<b>4</b>
<b>HISTORY</b> .....	<b>5</b>
<b>ACCREDITATION</b> .....	<b>7</b>
<i>Specialized Accreditation</i> .....	<b>7</b>
<b>SECTION II ENROLLMENT INFORMATION</b> .....	<b>8</b>
<b>PROGRAMS OF STUDY</b> .....	<b>8</b>
<b>ADMISSIONS TRENDS</b> .....	<b>9</b>
<b>FRESHMAN ENROLLMENT</b> .....	<b>10</b>
<b>ENROLLMENT TREND</b> .....	<b>13</b>
<b>UNDERGRADUATE ENROLLMENT</b> .....	<b>13</b>
<b>GRADUATE ENROLLMENT</b> .....	<b>19</b>
<b>SECTION III ENROLLMENT BY SCHOOLS</b> .....	<b>21</b>
<b>SECTION IV DEGREE COMPLETION</b> .....	<b>23</b>
<b>DEGREES AWARDED BY SCHOOL</b> .....	<b>23</b>
<b>SECTION V FACULTY AND STAFF</b> .....	<b>25</b>
<b>FACULTY DATA</b> .....	<b>25</b>
<b>STAFF DATA</b> .....	<b>27</b>
<b>STUDENT - FACULTY RATIO</b> .....	<b>27</b>
<b>SECTION VI FINANCIAL AID</b> .....	<b>28</b>
<b>NUMBER OF STUDENTS AWARDED FINANCIAL AID</b> .....	<b>28</b>
<b>AMOUNT OF AWARDED FINANCIAL AID</b> .....	<b>28</b>

## SECTION I GENERAL INFORMATION

---

### Introduction

The Office of Institutional Research serves as the repository for statistical research at the University. This annual publication provides administrators, faculty, staff, students and its supportive public with statistical data pertinent to University operations.

The Claflin University *Fact Book 2010* reflects statistical data over a five year period. The publication contains a broad representation of statistical data which allows the user to formulate serial correlations and analyze trends and patterns occurring at the University.

The *Fact Book* employs a multitude of resources to compile vast findings. The Office of Institutional Research expresses sincere appreciation to all those persons, whose invaluable professionalism and cooperation helped to make the study, once again, possible.

*Dr. Zia Hasan  
Vice President for Planning, Assessment,  
and Information Services*

*Ms. Letticia T. Ramlal  
Assistant Director  
Institutional Effectiveness*

*Please submit comments and suggestions to:*

Planning, Assessment and Information Services  
The Office of Institutional Effectiveness  
Claflin University  
Tingley Memorial Hall  
400 Magnolia Street  
Orangeburg, South Carolina 29115  
(803) 535-5219 or (803) 535-5678  
hasan@claflin.edu or lramlal@claflin.edu

### **Vision Statement**

Claflin University will be recognized as one of the premier undergraduate teaching and research universities in the world that prepares effective and visionary leaders with global perspectives.

### **Mission Statement**

Claflin University is a comprehensive institution of higher education affiliated with the United Methodist Church. A historically black university founded in 1869. Claflin is committed to providing students with access to exemplary educational opportunities in its undergraduate, graduate and continuing education programs. Claflin seeks to foster a rich community comprised of students, faculty, staff, and administrators who work to nurture and develop the skills and character needed for engaged citizenship and visionary and effective leadership.

In its undergraduate programs, Claflin provides students with the essential foundation of a liberal arts education. Emphasizing critical and analytic thinking, independent research, oral and written communication skills, the University invites students to use disciplined study to explore and confront the substantive challenges facing the global society. Claflin's graduate programs provide opportunities for advanced students to increase their specialization in particular fields of study oriented toward professional enhancement and academic growth. Its continuing education programs provide students with expanded avenues for professional development and personal fulfillment.

## **Claffin University Guiding Principles**

At the center of everything we do is a system of values informing and guiding all policies and programs. These values, expressed through our decisions and actions, are defined by five overarching guiding principles:

**COMMITMENT TO EXCELLENCE**

**COMMITMENT TO VALUING PEOPLE**

**COMMITMENT TO BEING CUSTOMER FOCUSED**

**COMMITMENT TO EXEMPLARY EDUCATIONAL PROGRAMS**

**COMMITMENT TO FISCAL ACCOUNTABILITY**

## **Strategic Goals**

**I. Leadership Development:** The University will strengthen and integrate all aspects of leadership development in order to ensure the development of students of exemplary achievement, distinctive confidence, integrity and a commitment to visionary leadership and selfless service.

**II. Academic Program Development:** The University will enhance the undergraduate and graduate curriculum to promote student success and increase the number of programs of distinction in the STEM (science, technology, engineering, mathematics), business and education disciplines and in academic areas that build on the institution's strengths and address critical regional, national and global needs.

**III. Resource Development:** The University will identify and secure the funds required to support its vision and strategic goals.

**IV. Accountability:** The University will manage its human, financial, and physical resources effectively and efficiently to achieve its strategic goals.

**V. Strategic Positioning:** The University will effectively communicate its achievements and the ways in which it contributes to the advancement of a global society.

## History

Claflin was founded in 1869 by Methodist missionaries to prepare freed slaves to take their rightful places as full American citizens. The University takes its name from two Methodist churchmen, Massachusetts Governor William Claflin and his father, Boston philanthropist Lee Claflin, who provided a large part of the funds to purchase the campus.

Dr. Alonzo Webster, a minister and educator from Vermont and a member of Claflin's Board of Trustees, secured Claflin's charter in 1869. The charter forbids discrimination of any sort among faculty, staff and students, making Claflin the first South Carolina university open to all students regardless of race, class or gender.

Claflin opened its doors with Dr. Webster as its first president. He came to South Carolina to teach at the Baker Biblical Institute in Charleston, an institution established by the S.C. Mission Conference of 1866 of the Methodist Episcopal Church for the education of African American ministers. In 1870 the Baker Biblical Institute merged with Claflin University. An act by the South Carolina General Assembly on March 12, 1872, designated the South Carolina State Agricultural and Mechanical Institute as a part of Claflin University. In 1896 the S.C. General Assembly passed an act of separation which severed the State Agricultural and Mechanical Institute from Claflin University and established a separate institution which eventually became South Carolina State University.

Since the administration of Dr. Webster, Claflin has been served by seven presidents: Dr. Edward Cooke (1872-1884); Dr. Lewis M. Dunton (1884-1922); Dr. Joseph B. Randolph (1922-1944); Dr. John J. Seabrook (1945-1955); Dr. Hubert V. Manning (1956-1984); Dr. Oscar A. Rogers, Jr. (1984-1994); and Dr. Henry N. Tisdale (1994-present).

Dr. Cooke left the presidency of Lawrence College to become the second president of Claflin. During his administration, a disastrous fire destroyed the Fisk Building, a proud monument designed by Robert Bates, recognized as the first certified Black Architect in the United States. In 1879 the first college class was graduated.

The Reverend Dr. Dunton, former vice president and development officer, was Claflin's third president. Dr. Dunton, a graduate of Syracuse University, was a practical educator. Under his administration the law department was set up under the Honorable J. J. Wright, a former Associate Justice of the S.C. Supreme Court; graduates were admitted to the South Carolina Bar; Claflin's property increased from six to 21 acres. After his retirement, Dr. Dunton deeded his personal home and six acres of land to Claflin.

Dr. Randolph, Claflin's fourth president, was the former president of Samuel Houston College and former dean of Wiley College. As a professional educator, he placed emphasis on a complete liberal arts education for the students who were inspired intellectually, culturally, and spiritually to launch into varied fields. The high school and upper grades were discontinued, but

the first four elementary grades were retained for the teacher education program; this part of the program was later discontinued.

Dr. Seabrook, director of Morgan Christian Center, Baltimore, Maryland, became the fifth president of Claflin. Dr. Seabrook persuaded the South Carolina Annual Conference to increase substantially its annual giving to Claflin. Furthermore, he revitalized the interest of the New England Conference of the Methodist Church in the institution. The endowment was increased, and the curriculum was expanded. The college received its first accreditation by the Southern Association of Colleges and Schools in 1948.

Dr. Manning was appointed Claflin's sixth president. He was a Methodist minister and former associate professor at Claflin. Under Dr. Manning's leadership the faculty was strengthened, the endowment increased and the physical plant was significantly expanded.

Dr. Rogers, former dean of the Graduate School at Jackson State University, became Claflin's seventh president. Under his administration the enrollment and endowment increased, the Grace Thomas Kennedy building was constructed, the financial base of the college improved, and two capital campaigns were completed. Dr. Rogers also commissioned a master plan to guide campus development into the 21st century.

Dr. Tisdale, Claflin's eighth and current president, was former senior vice president and chief academic officer at Delaware State University. Dr. Tisdale brought a wealth of scholarly achievement and demonstrated leadership to the University. He declared academic excellence the number one priority for Claflin. The first steps, designed to enhance the academic environment, included the establishment of the Claflin Honors College and the Center for Excellence in Science and Mathematics, and the national accreditation of more than a dozen academic programs. Graduate programs established include the Master of Business Administration, the Master of Science in Biotechnology and the Master of Education. Facilities enhancements include construction of the Living and Learning Center, Legacy Plaza, the Student Residential Center, the Music Center, and the new University Chapel. Claflin University is now recognized as one of the premier liberal arts institutions in the nation.

## **Accreditation**

Claflin University is accredited by the Commission on Colleges of the Southern Association of Colleges and Schools to award baccalaureate and masters degrees. Contact the Commission on Colleges at 1866 Southern Lane, Decatur, Georgia 30033-4097 or call 404-679-4500 for questions about the accreditation of Claflin University.

## **Specialized Accreditation**

The University is approved by the University Senate of the United Methodist Church for listing as a United Methodist Church related institution. The School of Education is accredited by the National Association for the Accreditation of Teacher Education (NCATE) and by the South Carolina State Board of Education. The University's School of Business Administration is nationally accredited by the Association of Collegiate Business Schools and Programs (ACBSP) to offer the Bachelor of Science in Business Administration and in Organizational Management. The Department of Music is an accredited institutional member of the National Association of Schools of Music (NASM). The Department of Chemistry is accredited by the American Chemical Society (ACS).

National Council for Accreditation of  
Teacher Education.  
2010 Massachusetts Ave NW, Suite 500  
Washington, DC 20036  
Phone: (202) 466-7496  
Fax: (202) 296-6620  
[www.ncate.org](http://www.ncate.org)

Association of Collegiate Business Schools  
and Programs  
11520 West 119th Street  
Overland Park, KS 66213  
Phone: (913) 339-9356  
Fax: (913) 339-6226  
[www.acbsp.org](http://www.acbsp.org)

National Association of Schools of Music  
11250 Roger Bacon Drive, Suite 21  
Reston, VA 20190-5248  
Phone: (703) 437-0700  
Fax: (703) 437-6312  
<http://nasm.arts-accredit.org/>

American Chemical Society  
1155 Sixteenth Street, NW  
Washington, DC 20036  
Phone: (202) 872-4600  
Fax: (614) 447-3713  
[www.acs.org](http://www.acs.org)



## SECTION II ENROLLMENT INFORMATION

---

### PROGRAMS OF STUDY

<b>MAJORS</b>	<b>DEGREE OFFERED</b>	
African and African American Studies	BA	
American Studies	BA	
Art	BA	<b>BA = Bachelor of Arts</b>
Art Education	BA	<b>BS = Bachelor of Science</b>
Biochemistry	BS	<b>MS = Master of Science</b>
Bioinformatics	BS	<b>MBA = Master of Business Administration</b>
Biology	BS	
Biotechnology	BS, MS	
Business Administration	BS, MBA	
Chemistry	BS	
Computer Engineering	BS	
Computer Science	BS	
Digital Design	BA	
Early Childhood Education	BS	
Elementary Education	BS	
English	BA	
English Education	BA	
Environmental Science	BS	
History	BA	
Human Performance and Recreation	BS	
Management	BS	
Management Information Science	BS	
Marketing	BS	
Mass Communication	BA	
Mathematics	BS	
Mathematics Education	BS	
Middle Level Education	BS	
Music	BA	
Music Education	BA	
Organizational Management	BS	
Philosophy and Religion	BA	
Politics and Justice Studies	BA	
Sociology	BA	
Sociology/Criminal Justice Administration	BA	
Sport Management	BS	

## Admissions Trends

Admissions Trend - First-Time, Degree Seeking Students											
Fall Semester	Applicants			Accepted			Enrolled			Percent Accepted	Enrolled as a percentage of Accepted
	Male	Female	Total	Male	Female	Total	Male	Female	Total		
2006	937	1774	2711	478	848	1326	125	275	400	49%	30%
2007	1058	1799	2857	480	814	1294	143	247	390	45%	30%
2008	1603	2405	4008	576	865	1441	154	311	465	36%	32%
2009	1637	2455	4092	569	854	1423	175	293	468	35%	33%
2010	1682	2522	4204	581	872	1453			423		
<b>5 Yr. Avg.</b>	<b>1383</b>	<b>2191</b>	<b>3574</b>	<b>537</b>	<b>851</b>	<b>1387</b>	<b>149</b>	<b>282</b>	<b>429</b>	<b>41%</b>	<b>31%</b>

Admissions Trend - All Applicants					
Fall Semester	Applicants	Accepted	Enrolled	Percent Accepted	Enrolled as a percentage of Accepted
2006	2970	1426	462	48%	32%
2007	3084	1415	533	46%	38%
2008	4225	1521	541	36%	36%
2009	4429	1531	588	35%	38%
2010	4489	1557	549	35%	35%
<b>5 Yr. Avg.</b>	<b>3839</b>	<b>1490</b>	<b>535</b>	<b>41%</b>	<b>36%</b>

Source: Claflin University Office of Admissions

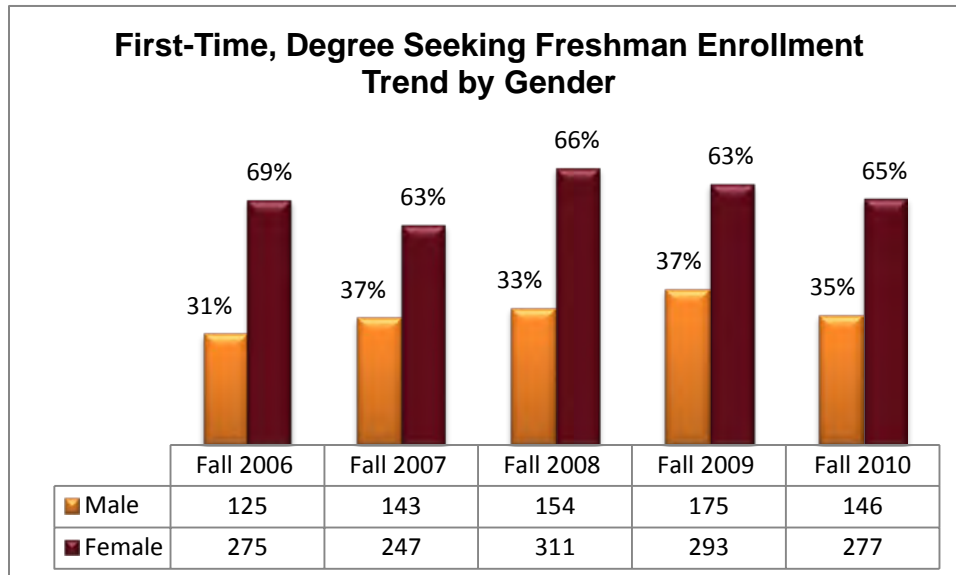
## Freshman Enrollment

First-Time, Degree-Seeking Freshman Data			
Fall 2010 Demographic			
	Male	Female	Total
Full-Time Traditional	142	274	<b>416</b>
Full-Time Non-Traditional	4	3	<b>7</b>
<b>Total</b>	<b>146</b>	<b>277</b>	<b>423</b>

First-Time Freshman	Male	Female	Total	%
Nonresident alien	6	3	<b>9</b>	2%
Black/African American	131	258	<b>389</b>	92%
American Indian/Alaska Native	2	3	<b>5</b>	1%
Asian	1	0	<b>1</b>	0%
Hispanic	3	12	<b>15</b>	4%
White	3	0	<b>3</b>	1%
Native Hawaiian/Pacific Islander	0	0	<b>0</b>	0%
Two or more races	0	0	<b>0</b>	0%
Race/ethnicity unknown	0	1	<b>1</b>	0%
<b>Total</b>	<b>146</b>	<b>277</b>	<b>423</b>	100%

<b>In-state</b>	298	70%
<b>Out-state</b>	116	27%
<b>International</b>	9	2%

	Average	Median
<b>SAT</b>	888	860
<b>ACT</b>	18	17
<b>GPA</b>	3.13	3.18



**Fall 2010**

<b>Majors</b>		<b>School of Education</b>	
	<b>No.</b>		<b>No.</b>
<b>School of Business</b>		Early Childhood Education	17
Business Administration	45	Elementary Education	14
Management	8	Human Performance and Recreation	6
Marketing	4	Middle Level Education	5
<b>Total</b>	<b>57</b>	Sport Management	8
		<b>Total</b>	<b>50</b>

<b>School of Humanities and Social Sciences</b>	
African and African American Studies	1
American Studies	
Art	4
Art Education	
Digital Design	4
English	6
English Education	2
History	3
Mass Communication	37
Music	17
Music Education	5
Philosophy and Religion	
Politics and Justice Studies	18
Sociology	30
<b>Total</b>	<b>127</b>

<b>School of Natural Science and Mathematics</b>	
Biochemistry	3
Bioinformatics	
Biology	95
Biotechnology	5
Chemistry	8
Computer Science	12
Computer Engineering	18
Environmental Science	4
Management Information Science	3
Mathematics	5
Mathematics Education	
3+2 Program (Applied Mathematics Track)	1
<b>Total</b>	<b>154</b>

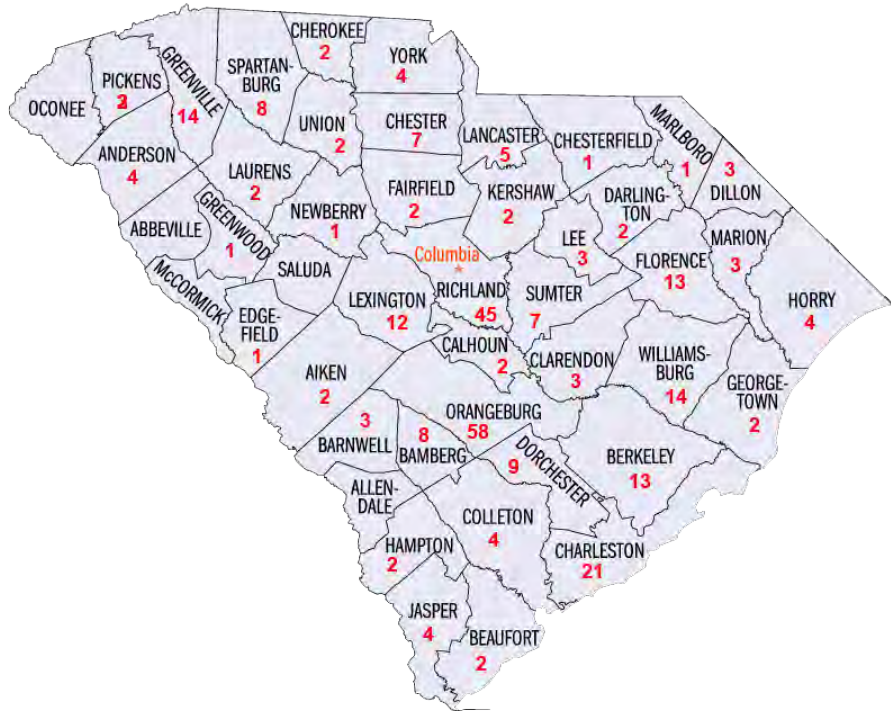
<b>Professional &amp; Continuing Studies</b>	
Sociology/Criminal Justice Administration	2
Organizational Management	1
Undeclared	4
<b>Total</b>	<b>7</b>

<b>Undeclared</b>	<b>28</b>
<b>Total Student Enrollment</b>	<b>423</b>

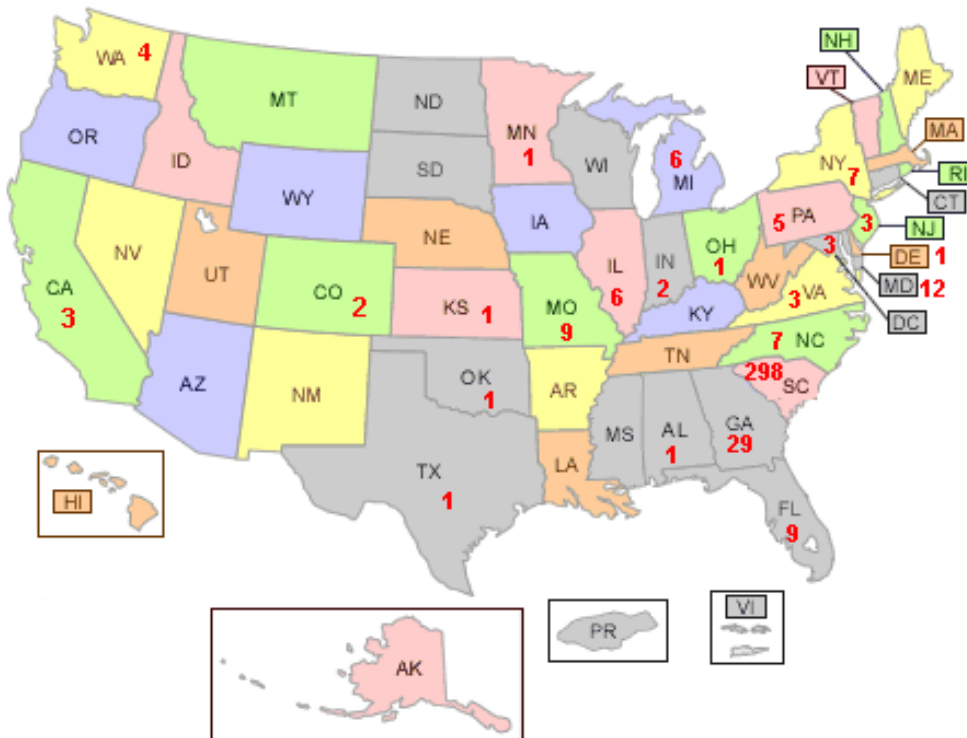
**First-Time Degree-Seeking Freshman Enrollment by Country  
Fall 2010**

<b>Country</b>	<b>No.</b>
Mexico	1
Nigeria	4
Trinidad & Tobago	4

**First-Time Degree-Seeking Freshman Enrollment by SC Counties  
Fall 2010**



**First-Time Degree-Seeking Freshman Enrollment by States  
Fall 2010**



## Enrollment Trend

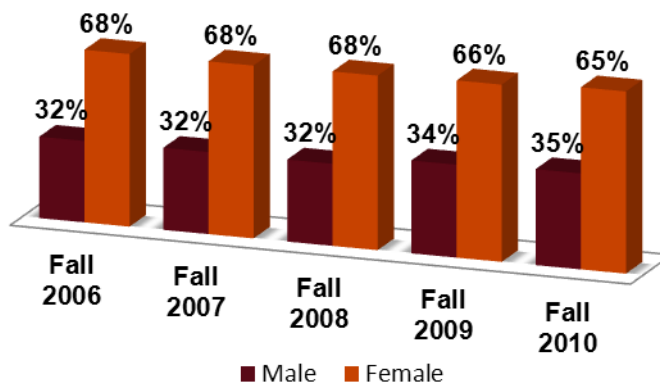
5 Year - Enrollment Trend															
	2006-2007			2007-2008			2008-2009			2009-2010			2010-2011		
Head Count	UG	GR	Total	UG	GR	Total	UG	GR	Total	UG	GR	Total	UG	GR	Total
<b>Fall</b>	1674	84	1758	1679	84	1763	1690	83	1773	1779	81	1860	1831	89	1920
<b>Spring</b>	1602	84	1686	1632	95	1727	1615	87	1702	1720	76	1796	1814	80	1894
<b>Summer</b>	*	*		261	31	292	293	44	337	330	54	384	374	45	419
<b>FTE</b>	<b>UG</b>	<b>GR</b>	<b>Total</b>	<b>UG</b>	<b>GR</b>	<b>Total</b>	<b>UG</b>	<b>GR</b>	<b>Total</b>	<b>UG</b>	<b>GR</b>	<b>Total</b>	<b>UG</b>	<b>GR</b>	<b>Total</b>
<b>Fall</b>	1628	82	1710	1621	80	1701	1650	78	1728	1735	77	1812	1780	77	1857
<b>Spring</b>	1546	87	1633	1560	82	1642	1575	90	1665	1667	73	1740	1751	65	1816
<b>Summer</b>	*	*		227	25	252	291	33	324	299	42	341	347	23	370

Key	
FTE	Full-Time Equivalent
UG	Undergraduate
GR	Graduate
*	Data not available upon publication

## Undergraduate Enrollment

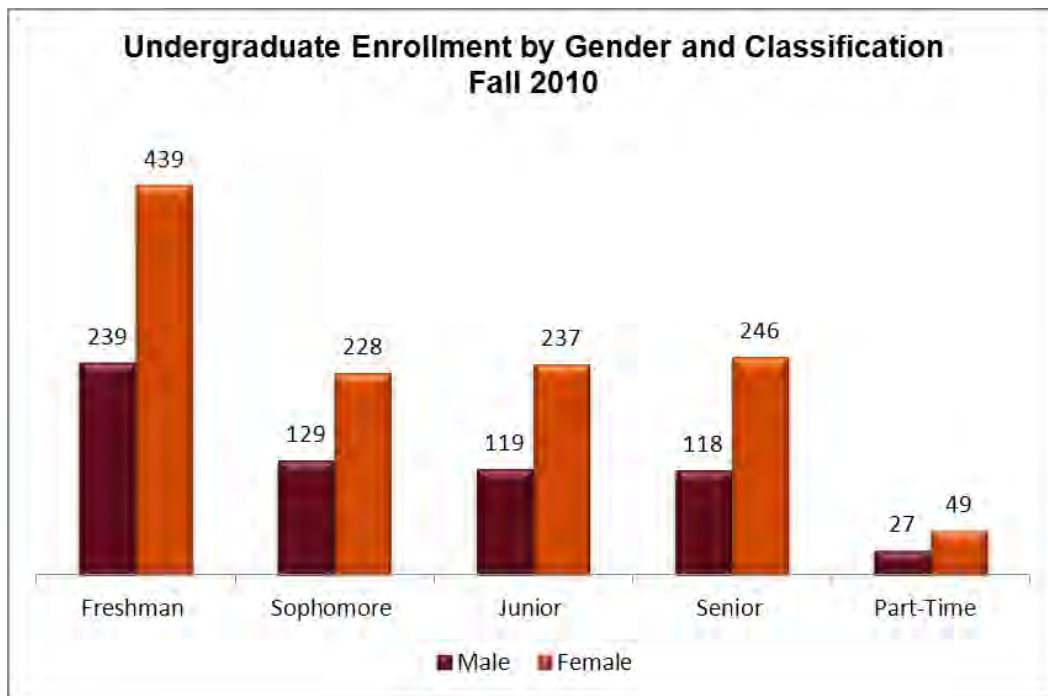
Undergraduate Enrollment Trend by Ethnicity and Gender										
	Fall 2006		Fall 2007		Fall 2008		Fall 2009		Fall 2010	
Ethnicity	Male	Female	Male	Female	Male	Female	Male	Female	Male	Female
Nonresident alien	25	38	24	34	25	28	18	19	22	15
Black/African-American	502	1081	499	1082	493	1100	567	1130	572	1129
American Indian/Alaska Native	0	1	0	2	0	2	1	2	9	14
Asian	2	3	2	2	2	1	1	1	2	5
Hispanic	2	0	2	1	3	3	5	1	12	22
White	6	14	14	15	13	9	14	7	14	8
Native Hawaiian/Pacific	-	-	-	-	-	-	-	-	0	0
Two or more races	-	-	-	-	-	-	-	-	1	4
Race/ethnicity unknown	0	0	0	2	5	6	6	7	0	2
<b>Total</b>	<b>537</b>	<b>1137</b>	<b>541</b>	<b>1138</b>	<b>541</b>	<b>1149</b>	<b>612</b>	<b>1167</b>	<b>632</b>	<b>1199</b>

### Undergraduate Enrollment by Gender Fall Semesters 2006-2010



### Undergraduate Enrollment by Age and Gender

Age Category	Fall 2006		Fall 2007		Fall 2008		Fall 2009		Fall 2010	
	Male	Female	Male	Female	Male	Female	Male	Female	Male	Female
<b>Under 18</b>	21	37	19	40	16	19	15	30	20	41
<b>18-19</b>	199	425	208	417	232	464	281	482	230	458
<b>20-21</b>	146	318	134	316	132	316	179	323	210	372
<b>22-24</b>	91	130	86	136	95	113	72	98	98	108
<b>25-29</b>	32	52	37	48	20	58	18	52	24	47
<b>30-34</b>	7	43	9	48	9	33	11	42	7	38
<b>35-39</b>	11	35	12	40	14	47	11	43	17	39
<b>40-49</b>	15	58	22	70	16	70	20	66	16	62
<b>50-64</b>	5	28	7	20	2	22	3	28	8	31
<b>65 and over</b>	1	0	0	0	0	0	0	0	0	0
<b>Unknown</b>	9	11	7	3	5	7	2	3	2	3
<b>Average Age</b>	<b>25</b>	<b>27</b>	<b>25</b>	<b>26</b>	<b>23</b>	<b>25</b>	<b>22</b>	<b>24</b>	<b>22</b>	<b>24</b>

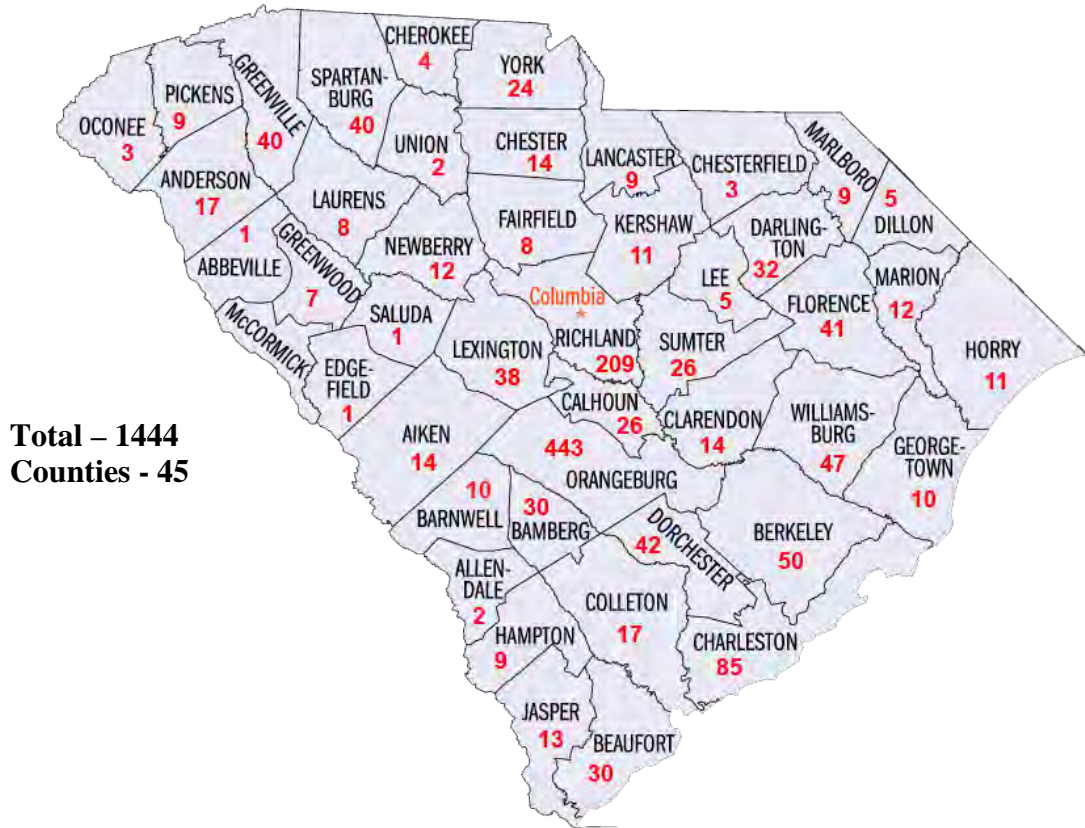


**Undergraduate Enrollment by Country  
Fall 2010**

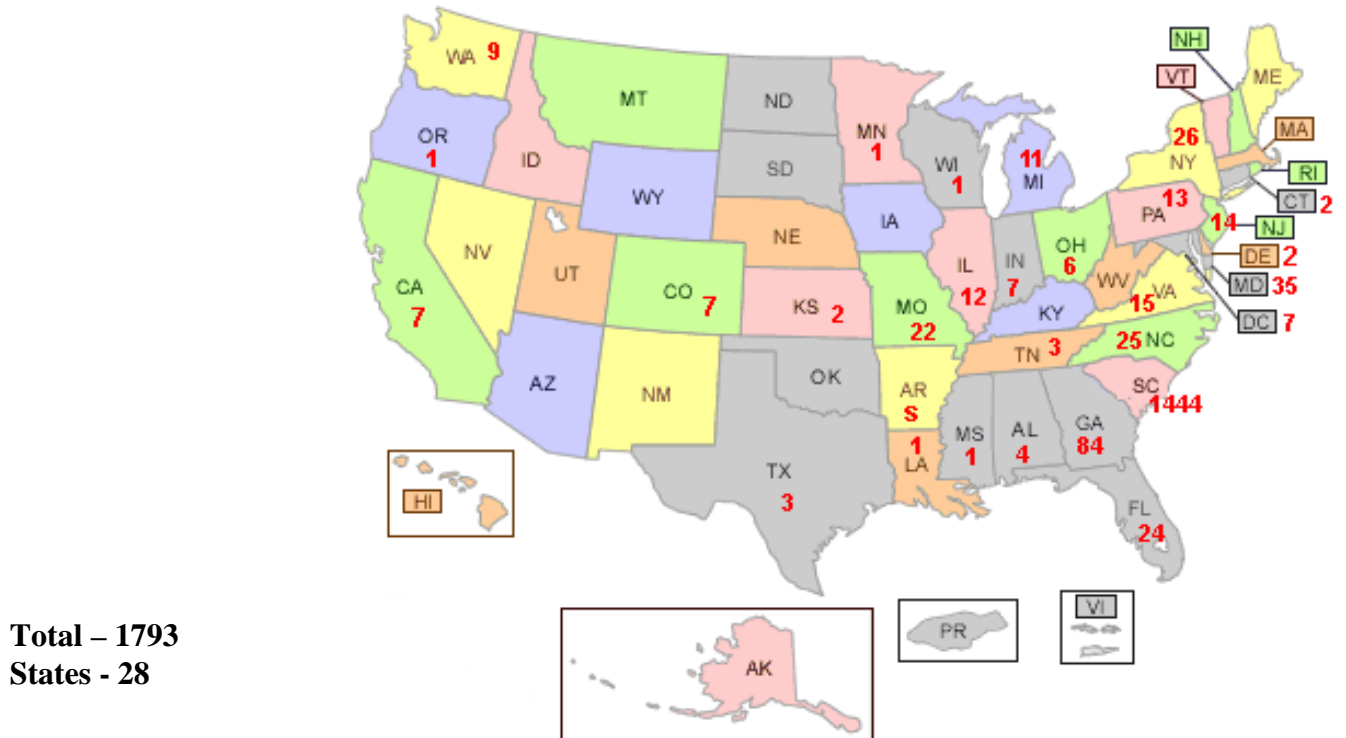
Country	No.
AUSTRIA	1
BENIN	2
GHANA	4
KENYA	1
MEXICO	2
NIGERIA	13
TRINIDAD AND TOBAGO	12
VIETNAM	1
VENEZUELA	1
ZIMBABWE	1
<b>Total</b>	<b>38</b>



## Undergraduate Enrollment by SC Counties Fall 2010



## Undergraduate Enrollment by States Fall 2010

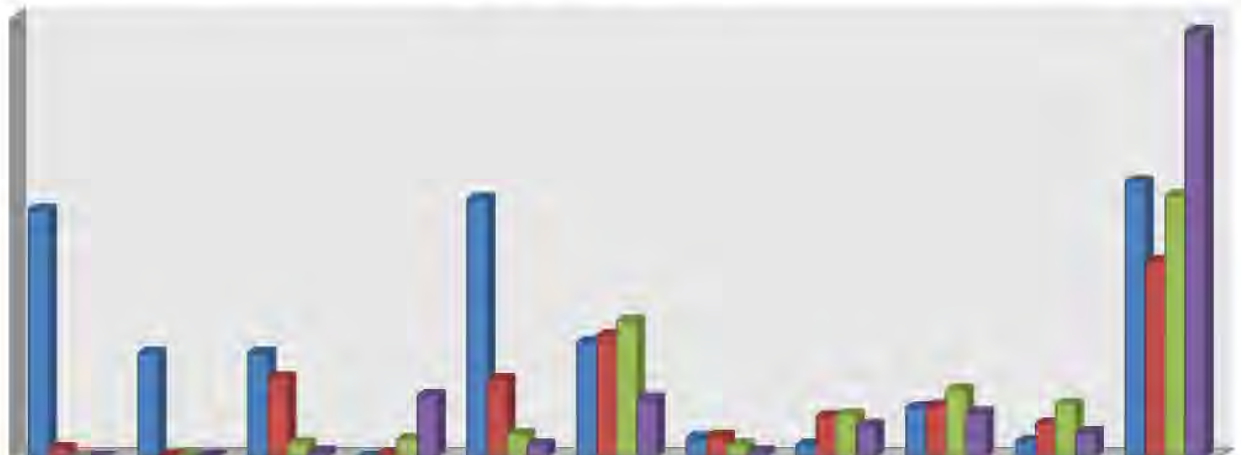


**Undergraduate Enrollment By Classification and Majors**

**Fall 2010**

	Full-Time				Part-Time
	Freshman	Sophomore	Junior	Senior	
<b>School of Business</b>					
Business Administration	71	44	38	25	1
Management	14	11	10	20	2
Marketing	7	8	20	14	0
<b>Total</b>	<b>92</b>	<b>63</b>	<b>68</b>	<b>59</b>	<b>3</b>
<b>School of Humanities and Social Sciences</b>					
African and African American Studies	1	0	2	0	0
American Studies	0	0	0	2	0
Art	7	2	1	1	0
Art Education	0	0	0	1	0
Digital Design	5	3	1	2	0
English	9	9	12	13	0
English Education	6	4	4	1	0
History	5	3	0	3	0
Mass Communication	55	28	27	22	1
Music	17	4	5	3	0
Music Education	6	3	0	10	2
Philosophy and Religion	1	2	4	5	0
Politics and Justice Studies	28	13	5	2	0
Sociology	49	36	39	50	0
<b>Total</b>	<b>189</b>	<b>107</b>	<b>100</b>	<b>115</b>	<b>3</b>
<b>School of Education</b>					
Early Childhood Education	31	14	11	10	1
Elementary Education	23	18	15	10	3
Human Performance and Recreation	10	7	13	3	0
Middle Level Education	7	3	8	7	1
Sport Management	15	12	11	11	1
<b>Total</b>	<b>86</b>	<b>54</b>	<b>58</b>	<b>41</b>	<b>6</b>
<b>School of Natural Science and Mathematics</b>					
Biochemistry	4	5	11	10	0
Bioinformatics	0	0	0	1	0
Biology	112	52	32	34	2
Biotechnology	5	2	2	1	0
Chemistry	11	1	3	3	0
Computer Engineering	21	7	6	2	0
Computer Science	17	4	1	5	1
Environmental Science	4	1	0	0	0
Management Information Science	3	6	2	3	0
Mathematics	10	3	3	2	0
Mathematics Education	0	4	2	3	1
3+2 Program (Applied Mathematics Track)	1	3	4	0	0
<b>Total</b>	<b>188</b>	<b>88</b>	<b>66</b>	<b>64</b>	<b>4</b>
<b>Professional &amp; Continuing Studies</b>					
Organizational Management	27	21	30	37	2
Sociology/Criminal Justice Administration	39	12	31	47	2
<b>Total</b>	<b>66</b>	<b>33</b>	<b>61</b>	<b>84</b>	<b>4</b>
<b>Undeclared</b>	<b>57</b>	<b>12</b>	<b>3</b>	<b>1</b>	<b>56</b>
<b>Total All</b>	<b>678</b>	<b>357</b>	<b>356</b>	<b>364</b>	<b>76</b>

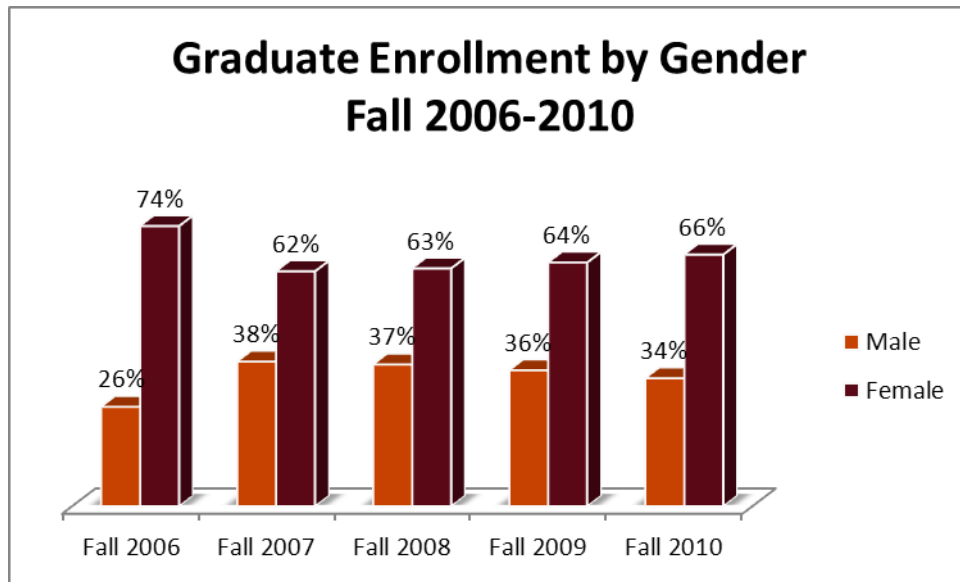
## Undergraduate Housing Enrollment By Classification Fall 2010



	AHALL	CHALL	DHALL	EHALL	HRH	KHALL	MILLH	NHALL	SHALL	WHALL	Off-Campus
■ Freshman	140	59	59	0	146	65	11	7	28	9	156
■ Sophomore	5	1	45	2	44	69	12	23	29	19	111
■ Junior	0	1	8	10	13	77	7	24	38	30	148
■ Senior	0	1	3	35	7	33	3	18	25	14	241

## Graduate Enrollment

Five Years - Graduate Enrollment Trend by Ethnicity and Gender										
Ethnicity	Fall 2006		Fall 2007		Fall 2008		Fall 2009		Fall 2010	
	Male	Female	Male	Female	Male	Female	Male	Female	Male	Female
Nonresident alien	2	2	8	2	11	4	5	3	3	3
Black/African America	16	55	22	48	19	47	20	46	22	52
American Indian/Alaska Native	0	0	0	0	0	0	0	0	0	0
Asian	1	1	2	1	0	0	2	1	3	1
Hispanic	1	0	0	0	0	0	0	0	1	0
White	2	4	0	1	1	1	1	2	1	3
Native Hawaiian/Other Pacific Islander										
Two or more races										
Race/ethnicity unknown	0	0	0	0	0	0	1	0		
<b>Total</b>	<b>22</b>	<b>62</b>	<b>32</b>	<b>52</b>	<b>31</b>	<b>52</b>	<b>29</b>	<b>52</b>	<b>30</b>	<b>59</b>



### Graduate Enrollment by Age and Gender

Age Category	Fall 2006		Fall 2007		Fall 2008		Fall 2009		Fall 2010	
	Male	Female	Male	Female	Male	Female	Male	Female	Male	Female
<b>Under 18</b>	0	0	0	0	0	0	0	0	0	0
<b>18-19</b>	0	0	0	0	0	0	0	0	0	0
<b>20-21</b>	1	0	3	1	1	0	0	0	0	0
<b>22-24</b>	5	14	7	5	11	16	12	15	12	15
<b>25-29</b>	10	14	7	9	7	6	7	13	7	13
<b>30-34</b>	4	8	4	15	3	9	4	7	4	7
<b>35-39</b>	1	7	5	9	4	7	4	6	4	6
<b>40-49</b>	0	11	4	6	2	9	1	7	1	7
<b>50-64</b>	1	6	1	7	2	5	1	3	1	3
<b>65 and over</b>	0	0	0	0	0	0	0	0		
<b>Unknown</b>	0	1	0	0	1	0	0	1		
<b>Average Age</b>	<b>32</b>	<b>37</b>	<b>34</b>	<b>38</b>	<b>31</b>	<b>35</b>	<b>29</b>	<b>31</b>	<b>28</b>	<b>29</b>

### Graduate Enrollment By State, SC County & Country Fall 2010

State	No.
CALIFORNIA	1
GEORGIA	4
ILLINOIS	1
MARYLAND	1
NEW JERSEY	1
NORTH CAROLINA	1
SOUTH CAROLINA	73
TENNESSEE	1
<b>Total</b>	<b>83</b>

SC County	No.
Akien	1
Allendale	1
Anderson	1
Bamberg	3
Beaufort	1
Charleston	3
Colleton	1
Darlington	1
Fairfield	1
Florence	2
Greenville	1
Jasper	1
Kershaw	1
Laurens	1
Lexington	2
Marion	1
Orangeburg	41
Richland	9
Williamsburg	1
<b>Total</b>	<b>73</b>

Country	No.
INDIA	1
JAMAICA	1
NIGERIA	1
PAKISTAN	1
TRINIDAD AND TOBAGO	2
<b>Total</b>	<b>6</b>

## SECTION III ENROLLMENT BY SCHOOLS

Undergraduate Enrollment Trend by Schools					
<i>School of Business</i>					
<i>Majors</i>	<i>Fall 2006</i>	<i>Fall 2007</i>	<i>Fall 2008</i>	<i>Fall 2009</i>	<i>Fall 2010</i>
Business Administration	159	169	185	193	179
Management	45	46	56	60	57
Marketing	42	48	55	54	49
<b>Total</b>	<b>246</b>	<b>263</b>	<b>296</b>	<b>307</b>	<b>285</b>

<i>School of Humanities and Social Sciences</i>					
<i>Majors</i>	<i>Fall 2006</i>	<i>Fall 2007</i>	<i>Fall 2008</i>	<i>Fall 2009</i>	<i>Fall 2010</i>
African and African American Studies	0	1	1	1	3
American Studies	1	1	2	2	2
Art	23	12	13	12	11
Art Education	3	2	3	4	1
Digital Design	0	0	2	4	11
English	31	32	30	39	43
English Education	15	15	10	15	15
History	12	10	15	15	11
Mass Communication	118	102	123	109	133
Music	13	21	19	17	29
Music Education	26	23	26	27	21
Philosophy and Religion	8	10	16	16	12
Politics and Justice Studies	0	0	0	19	48
Sociology	151	154	193	182	174
<b>Total</b>	<b>401</b>	<b>383</b>	<b>453</b>	<b>462</b>	<b>514</b>

<i>School of Education</i>					
<i>Majors</i>	<i>Fall 2006</i>	<i>Fall 2007</i>	<i>Fall 2008</i>	<i>Fall 2009</i>	<i>Fall 2010</i>
Early Childhood Education	81	66	60	67	67
Elementary Education	118	116	90	81	69
Human Performance and Recreation	6	8	8	21	33
Middle Level Education	2	7	15	19	26
Sport Management	47	40	52	58	50
Child Development	1	N/A	N/A	N/A	N/A
<b>Total</b>	<b>255</b>	<b>237</b>	<b>225</b>	<b>246</b>	<b>245</b>

**School of Natural Science and Mathematics**

<i>Majors</i>	<i>Fall 2006</i>	<i>Fall 2007</i>	<i>Fall 2008</i>	<i>Fall 2009</i>	<i>Fall 2010</i>
Biochemistry	27	35	42	34	30
Bioinformatics	2	4	2	1	1
Biology	148	147	148	184	232
Biotechnology	5	8	13	14	10
Chemistry	12	15	18	15	18
Computer Engineering	28	28	33	28	36
Computer Science	27	37	25	32	28
Environmental Science	1	0	1	3	5
Management Information Science	18	22	12	15	14
Mathematics	28	15	27	18	18
Mathematics Education	10	15	10	17	10
3+2 Program (Applied Mathematics Track)	N/A	N/A	N/A	7	8
<b>Total</b>	<b>306</b>	<b>326</b>	<b>331</b>	<b>368</b>	<b>410</b>

<b>Undecided</b>	256	272	185	137	129
------------------	-----	-----	-----	-----	-----

**Professional & Continuing Studies**

<i>Majors</i>	<i>Fall 2006</i>	<i>Fall 2007</i>	<i>Fall 2008</i>	<i>Fall 2009</i>	<i>Fall 2010</i>
Sociology/Criminal Justice Administration	107	110	105	137	131
Organizational Management	103	88	95	122	117
<b>Total</b>	<b>210</b>	<b>198</b>	<b>200</b>	<b>259</b>	<b>248</b>

**Graduate School**

<i>Majors</i>	<i>Fall 2006</i>	<i>Fall 2007</i>	<i>Fall 2008</i>	<i>Fall 2009</i>	<i>Fall 2010</i>
Biotechnology	16	18	18	13	19
Business Administration	49	49	58	63	64
Educational Studies	19	17	7	5	6
<b>Total</b>	<b>84</b>	<b>84</b>	<b>83</b>	<b>81</b>	<b>89</b>

<b>Total Student Enrollment</b>	<b>1758</b>	<b>1763</b>	<b>1773</b>	<b>1860</b>	<b>1920</b>
---------------------------------	-------------	-------------	-------------	-------------	-------------

Source: All Enrollment Data – The Office of Enrollment Management

## SECTION IV DEGREE COMPLETION

### Degrees Awarded by School

#### Comparative Data - Claflin University Completions

Note: The academic year for graduation numbers are from July 1 of previous year to June 30 of current year

Major	Number Graduated 2005-2006	Number Graduated 2006-2007	Number Graduated 2007-2008	Number Graduated 2008-2009	Number Graduated 2009-2010	Number Graduated 2010-2011
<b>Graduate School</b>						
Biotechnology (GR)	0	7	6	10	5	7
Business Administration (GR)	11	21	15	25	23	28
Educational Studies (GR)	0	2	13	4	3	5
<b>Total</b>	<b>11</b>	<b>30</b>	<b>34</b>	<b>39</b>	<b>31</b>	<b>40</b>

#### School of Business

Business Administration	22	13	23	18	25	21
Management	4	13	16	12	14	16
Marketing	4	8	10	15	12	14
<b>Total</b>	<b>30</b>	<b>34</b>	<b>49</b>	<b>45</b>	<b>51</b>	<b>51</b>

#### School of Humanities and Social Sciences

African and African American Studies	0	0	2	0	0	0
American Studies	0	0	0	1	0	1
Art	1	8	2	4	0	0
Art Education	0	0	0	0	0	1
Digital Design	0	0	0	0	0	3
English	9	7	13	6	8	15
English Education	0	1	0	1	1	0
History	1	4	3	5	2	4
Mass Communication	24	28	18	21	21	19
Music	3	3	3	1	5	4
Music Education	0	3	0	2	2	0
Philosophy and Religion	3	5	4	4	2	5
Politics and Justice Studies	0	0	0	0	1	2
Sociology	41	39	51	57	32	41
Double Major-Mass Communication & Sociology				1		
Double Major- American Studies & Politics and Justice Studies						1
<b>Total</b>	<b>82</b>	<b>98</b>	<b>96</b>	<b>103</b>	<b>74</b>	<b>96</b>



**School of Education**

Early Childhood Education	4	3	4	4	2	0
Elementary Education	5	7	6	9	4	1
Human Performance and Recreation	11	5	5	0	1	6
Middle Level Education	0	0	0	0	0	3
Sport Management	3	6	4	3	17	11
Child Development	1	N/a	N/a	N/a	N/a	
<b>Total</b>	<b>24</b>	<b>21</b>	<b>19</b>	<b>16</b>	<b>24</b>	<b>21</b>

**School of Natural Science and Mathematics**

Biochemistry	10	3	4	6	1	9
Bioinformatics	1	0	0	1	0	1
Biology	14	19	18	13	20	26
Biotechnology	1	0	1	4	1	0
Chemistry	1	1	1	1	2	0
Computer Science	9	6	2	3	7	1
Computer Engineering	0	3	2	4	4	2
Environmental Science	0	1	1	1	0	0
Management Information Science	9	2	6	4	1	5
Mathematics	5	4	1	5	1	5
Mathematics Education	3	0	1	0	1	2
3+2 Program Mathematics (Applied Mathematics Track)						2
<b>Total</b>	<b>53</b>	<b>39</b>	<b>37</b>	<b>42</b>	<b>38</b>	<b>53</b>

**Professional & Continuing Studies**

Organizational Management	40	35	34	28	37	38
Sociology/Criminal Justice Administration	41	46	45	33	56	60
<b>Total</b>	<b>81</b>	<b>81</b>	<b>79</b>	<b>61</b>	<b>93</b>	<b>98</b>

<b>Total Graduated</b>	<b>281</b>	<b>303</b>	<b>314</b>	<b>306</b>	<b>311</b>	<b>359</b>
------------------------	------------	------------	------------	------------	------------	------------

Source: Claflin University Office of Enrollment Management  
 Reported Created by The Office of  
 Institutional Effectiveness

## SECTION V FACULTY AND STAFF

### Faculty Data

<sup>1</sup> Faculty Demographics by School Fall 2010								
	<i>School of Business</i>		<i>School of Humanities and Social Sciences</i>		<i>School of Education</i>		<i>School of Natural Science and Mathematics</i>	
	No.	Percent	No.	Percent	No.	Percent	No.	Percent
Full-Time	12	60%	59	71%	11	69%	34	87%
Part-Time	8	40%	24	29%	5	31%	5	13%
<b>Total</b>	<b>20</b>	<b>100%</b>	<b>83</b>	<b>100%</b>	<b>16</b>	<b>100%</b>	<b>39</b>	<b>100%</b>

Full-Time Faculty								
<b>Gender</b>								
Male	8	67%	30	51%	5	45%	24	71%
Female	4	33%	29	49%	6	55%	10	29%
<b>Total</b>	<b>12</b>	<b>100%</b>	<b>59</b>	<b>100%</b>	<b>11</b>	<b>100%</b>	<b>34</b>	<b>100%</b>

<b>Ethnicity</b>								
Nonresident Alien	1	8%	2	3%	1	9%	6	18%
African American/Black	7	58%	34	58%	8	73%	12	35%
American Indian/Alaskan Native								
Asian	1	8%	5	8%	1	9%	12	35%
Native Hawaiian/Other Pacific Islander								
Hispanics of any race			3	5%				
White	3	25%	15	25%	1	9%	3	9%
Two or more races							1	3%

<b>Rank</b>								
Professor	1	8%	10	17%	1	9%	6	18%
Associate	1	8%	7	12%	1	9%	8	24%
Assistant	7	58%	31	53%	6	55%	16	47%
Instructor	3	25%	11	19%	2	18%	3	9%
Lecturer	0	0%	0	0%	1	9%	1	3%

<b>Tenureship</b>								
T - Tenured	2	17%	13	22%	2	18%	10	29%
TT - On tenure track	7	58%	29	49%	6	55%	19	56%
NTT - Not on tenure track	3	25%	17	29%	3	27%	5	15%

<b>Degree Status</b>								
Terminal Degree	7	58%	46	78%	9	82%	27	79%
Master's Degree	5	42%	13	22%	2	18%	7	21%

<sup>1</sup>Includes Deans

Source: Claflin University Human Resource & Integrated Postsecondary Education Data Systems (IPEDS)

Faculty Demographic - 5 Year Trend										
	Number					Percentage				
	Fall 2006	Fall 2007	Fall 2008	Fall 2009	Fall 2010	Fall 2006	Fall 2007	Fall 2008	Fall 2009	Fall 2010
Full-Time	102	96	104	109	116	69%	72%	71%	81%	73%
Part-Time	46	37	42	26	42	31%	28%	29%	19%	27%
<b>Total</b>	<b>148</b>	<b>133</b>	<b>146</b>	<b>135</b>	<b>158</b>	<b>100%</b>	<b>100%</b>	<b>100%</b>	<b>100%</b>	<b>100%</b>
Full-Time Faculty										
<b>Gender</b>										
Male	61	57	58	60	67	60%	59%	56%	55%	58%
Female	41	39	46	49	49	40%	41%	44%	45%	42%
<b>Total</b>	<b>102</b>	<b>96</b>	<b>104</b>	<b>109</b>	<b>116</b>	<b>100%</b>	<b>100%</b>	<b>100%</b>	<b>100%</b>	<b>100%</b>
<b>Ethnicity</b>										
Nonresident Alien	6	6	9	7	10	6%	6%	9%	6%	9%
African American/Black	50	48	54	56	59	49%	50%	52%	51%	51%
American Indian/Alaskan Native	0	0	0	0	0	0%	0%	0%	0%	0%
Asian	23	20	19	19	19	23%	21%	18%	17%	16%
Native Hawaiian/ Other Pacific Islander	0	0	0	0	0	0%	0%	0%	0%	0%
Hispanics of any race	0	0	1	2	3	0%	0%	1%	2%	3%
White	23	22	21	25	22	23%	23%	20%	23%	19%
Two or more races	0	0	0	0	1					1%
Race/Ethnicity unknown	0	0	0	0	0	0%	0%	0%	0%	0%
<b>Rank</b>										
Professor	19	18	17	19	18	19%	19%	16%	17%	16%
Associate	25	18	19	14	17	25%	19%	18%	13%	15%
Assistant	47	49	49	60	60	46%	51%	47%	55%	52%
Instructor	9	10	17	14	19	9%	10%	16%	13%	52%
Lecturer	2	1	2	2	2	2%	1%	2%	2%	2%
<b>Tenureship</b>										
T - Tenured	24	20	19	25	27	24%	21%	18%	23%	23%
TT - On tenure track	58	58	64	60	61	57%	60%	62%	55%	53%
NTT - Not on tenure track	20	18	21	24	28	20%	19%	20%	22%	24%
<b>Degree Status</b>										
Terminal Degree	74	75	78	84	91	73%	78%	75%	77%	78%
Master's Degree	28	21	26	25	25	27%	22%	25%	23%	22%

Source: Claflin University Human Resource & Integrated Postsecondary Education Data Systems (IPEDS)

## Staff Data

<b>Staff Demographics Fall 2010</b>										
	Executive		Professional		Clerical		Service/ Maintenance		Total	
	No.	Percent	No.	Percent	No.	Percent	No.	Percent	No.	Percent
Full-Time	34	14%	110	45%	55	22%	27	11%	226	92%
Part-Time	1	0%	15	6%	1	0%	2	1%	19	8%
Total Staff	35	14%	125	51%	56	23%	29	12%	245	
<b>Full-Time Staff</b>										
<b>Gender</b>										
Male	15	7%	38	17%	1	0%	10	4%	64	28%
Female	19	8%	72	32%	54	24%	17	8%	162	72%
Total Full-Time Staff	34	15%	110	49%	55	24%	27	12%	226	100%
<b>Ethnicity</b>										
Nonresident alien			9	4%			1	0%	10	4%
Black/African American	31	14%	84	37%	51	23%	26	12%	192	85%
American Indian/Alaska Native										
Asian	1	0%	8	4%					9	4%
Hispanic										
White	2	1%	9	4%	2	1%			13	6%
Native Hawaiian/Pacific										
Two or more races										
Race/ethnicity unknown					1	0%			1	0%

## Student - Faculty Ratio

<b>Student-Faculty Ratio Trend</b>					
	Fall 2006	Fall 2007	Fall 2008	Fall 2009	Fall 2010
Student FTE	1375	1356	1643	1733	1857
Faculty FTE	111	106	118	120	132
Student-Faculty Ratio	12 to 1	13 to 1	14 to 1	14 to 1	14 to 1

Source: Claflin University Human Resource & Integrated Postsecondary Education Data Systems (IPEDS)

<sup>2</sup> Integrated Postsecondary Education Data Systems (IPEDS) Definition

## SECTION VI FINANCIAL AID

---

### Number of Students Awarded Financial Aid

Awards by Number of Students						
Type of Funding	2005-2006	2006-2007	2007-2009	2008-2009	2009-2010	2010-2011
Federal Work-Study	208	197	190	227	155	204
Guaranteed Student Loans	1633	1458	1193	1152	1546	1642
Palmetto Fellow	6	4	3	4	5	6
Palmetto Life	349	385	366	340	368	382
Pell Grants	1219	1214	1193	1152	1391	1442
Scholarships - External	263	463	382	356	363	526
Scholarships - Internal	567	555	595	948	946	970
SC Hope Scholarship	47	49	57	75	87	59
SC Tuition Grant	1014	1068	1004	986	1060	1033
Alternative/Private Loans	243	319	293	201	83	62
Supplemental/Plus Loans	104	100	125	96	87	359

### Amount of Awarded Financial Aid

Amount of Awards						
Type of Funding	2005-2006	2006-2007	2007-2008	2008-2009	2009-2010	2010-2011
Federal Work-Study	\$ 264,841.00	\$ 239,307.00	\$ 221,490.00	\$ 250,481.00	\$ 230,372.00	\$ 214,911.00
Guaranteed Student Loans	\$ 9,552,637.00	\$ 10,154,612.00	\$ 10,262,925.00	\$ 11,622,971.00	\$ 13,613,119.00	\$ 13,175,130.00
Palmetto Fellow	\$ 33,500.00	\$ 26,800.00	\$ 20,100.00	\$ 28,000.00	\$ 28,400.00	\$ 48,750.00
Palmetto Life	\$ 1,657,500.00	\$ 1,857,500.00	\$ 1,854,625.00	\$ 1,672,300.00	\$ 1,805,498.00	\$ 1,937,640.00
Pell Grants	\$ 3,727,427.00	\$ 3,790,360.00	\$ 3,770,840.00	\$ 4,322,096.00	\$ 6,394,983.00	\$ 6,502,386.00
Scholarships - External	\$ 766,313.00	\$ 770,582.00	\$ 954,708.00	\$ 1,195,944.00	\$ 944,365.00	\$ 1,716,001.00
Scholarships - Internal	\$ 3,957,696.00	\$ 4,161,797.00	\$ 4,653,104.00	\$ 5,395,801.00	\$ 5,760,305.00	\$ 6,388,210.00
SC Hope Scholarship	\$ 121,900.00	\$ 127,200.00	\$ 131,600.00	\$ 194,600.00	\$ 234,123.00	\$ 154,000.00
SC Tuition Grant	\$ 2,611,315.00	\$ 2,909,777.00	\$ 3,049,835.00	\$ 3,032,377.00	\$ 2,697,217.00	\$ 2,548,632.00
Alternative/Private Loans	\$ 1,824,495.00	\$ 2,718,897.00	\$ 2,621,577.00	\$ 1,681,433.00	\$ 672,160.00	\$ 546,411.00
Supplemental/Plus Loans	\$ 1,004,529.00	\$ 1,118,043.00	\$ 1,260,318.00	\$ 876,161.00	\$ 918,873.00	\$ 2,873,824.00
<b>TOTAL</b>	<b>\$ 25,522,153.00</b>	<b>\$ 27,874,875.00</b>	<b>\$ 28,801,122.00</b>	<b>\$ 30,272,164.00</b>	<b>\$ 33,299,415.00</b>	<b>\$ 36,105,895.00</b>



Dr. Zia Hasan  
VP Planning, Assessment & Information Services  
Tingley Hall, Rm #3-S8  
Email: [hasan@claflin.edu](mailto:hasan@claflin.edu)  
Ph: (803) 535-5219  
Fx: (803) 535-5431

Ms. Leticia Ramlal  
Assistant Director of Institutional Effectiveness  
Tingley Hall, Rm #3-S8  
Email: [lramlal@claflin.edu](mailto:lramlal@claflin.edu)  
Ph: (803) 535-5678  
Fx: (803) 535-5431