

VERSION 2014-2016



CLAFLIN UNIVERSITY FACT BOOK

OFFICE OF INSTITUTIONAL EFFECTIVENESS

400 Magnolia Street, Orangeburg, SC 29115

TABLE OF CONTENTS

SECTION I: GENERAL INFORMATION	1
<i>Introduction</i>	1
<i>Vision Statement</i>	2
<i>Mission Statement</i>	2
<i>Claflin University Guiding Principles</i>	2
<i>Strategic Goals</i>	2
<i>History</i>	3
<i>Accreditation</i>	4
<i>Specialized Accreditation</i>	4
<i>Institutional Membership</i>	5
<i>Board of Trustees and Officers</i>	7
<i>Board of Visitors and Officers</i>	8
<i>Organizational Chart</i>	9
<i>Programs of Study</i>	10
SECTION II: ENROLLMENT INFORMATION	11
<i>Total Enrollment</i>	11
<i>Admissions</i>	13
<i>First-Time, Degree-Seeking Freshmen</i>	13
<i>Five Year Enrollment of Undergraduate Entering Class</i>	14
<i>Geographic Distribution of First-Time Degree-Seeking Fall Freshmen</i>	15
<i>First-Time Degree-Seeking Freshmen Enrollment by Major</i>	16
<i>First-Time Degree-Seeking Freshmen Retention and Graduation Rates</i>	17
<i>Undergraduate Enrollment</i>	17
<i>Five Year Non-Traditional Undergraduate Enrollment by Major</i>	19
<i>Five Year Enrollment of Graduate Students</i>	19
<i>Five Year Enrollment of Graduate Students by Major</i>	20
<i>Geographic Distribution of Graduates</i>	21
SECTION III: DEGREE COMPLETION	22
SECTION IV: INSTRUCTIONAL STAFF	24
<i>Student - Faculty Ratio</i>	25
SECTION V: FINANCIAL AID	26
<i>Number of Students Awarded Financial Aid</i>	26
<i>Amount of Awarded Financial Aid</i>	26

SECTION I: GENERAL INFORMATION

Introduction

The Office of Institutional Effectiveness serves as the repository for statistical research at the University. This annual publication provides administrators, faculty, staff, students and the public with statistical data pertinent to University operations.

The 2014-2016 Clafin University Fact Book reflects statistical data over a five year period. The publication contains a broad representation of statistical data which allows the user to formulate serial correlations and analyze trends and patterns occurring at the University.

The Fact Book employs a multitude of resources to compile vast findings. The Office of Testing and Assessment expresses sincere appreciation to all those persons, whose invaluable professionalism and cooperation assisted with publishing this document, once again, possible.

Vision Statement

Clafin University will be recognized as one of the premier undergraduate teaching and research universities in the world that prepares effective and visionary leaders with global perspectives.

Mission Statement

Clafin University is a comprehensive institution of higher education affiliated with the United Methodist Church. A historically black university founded in 1869. Clafin is committed to providing students with access to exemplary educational opportunities in its undergraduate, graduate and continuing education programs. Clafin seeks to foster a rich community comprised of students, faculty, staff, and administrators who work to nurture and develop the skills and character needed for engaged citizenship and visionary and effective leadership.

In its undergraduate programs, Clafin provides students with the essential foundation of a liberal arts education. Emphasizing critical and analytic thinking, independent research, oral and written communication skills, the University invites students to use disciplined study to explore and confront the substantive challenges facing the global society. Clafin's graduate programs provide opportunities for advanced students to increase their specialization in particular fields of study oriented toward professional enhancement and academic growth. Its continuing education programs provide students with expanded avenues for professional development and personal fulfillment.

Clafin University Guiding Principles

At the center of everything we do is a system of values informing and guiding all policies and programs. These values, expressed through our decisions and actions, are defined by five over-arching guiding principles:

COMMITMENT TO EXCELLENCE

COMMITMENT TO VALUING PEOPLE

COMMITMENT TO BEING CUSTOMER FOCUSED

COMMITMENT TO EXEMPLARY EDUCATIONAL PROGRAMS

COMMITMENT TO FISCAL ACCOUNTABILITY

Strategic Goals

I. Leadership Development: The University will strengthen and integrate all aspects of leadership development in order to ensure the development of students of exemplary achievement, distinctive confidence, integrity and a commitment to visionary leadership and selfless service.

II. Academic Program Development: The University will enhance the undergraduate and graduate curriculum to promote student success and increase the number of programs of distinction in the STEM (science, technology, engineering, and mathematics), business and education disciplines and in academic areas that build on the institution's strengths and address critical regional, national and global needs.

III. Resource Development: The University will identify and secure the funds required to support its vision and strategic goals.

IV. Accountability: The University will manage its human, financial, and physical resources effectively and efficiently to achieve its strategic goals.

V. Strategic Positioning: The University will effectively communicate its achievements and the ways in which it contributes to the advancement of a global society.

History

Clafin was founded in 1869 by Methodist missionaries to prepare freed slaves to take their rightful places as full American citizens. The University takes its name from two Methodist churchmen, Massachusetts Governor William Claflin and his father, Boston philanthropist Lee Claflin, who provided a large part of the funds to purchase the campus.

Dr. Alonzo Webster, a minister and educator from Vermont and a member of Claflin's Board of Trustees, secured Claflin's charter in 1869. The charter forbids discrimination of any sort among faculty, staff and students, making Claflin the first South Carolina University open to all students regardless of race, class or gender.

Clafin opened its doors with Dr. Webster as its first president. He came to South Carolina to teach at the Baker Biblical Institute in Charleston, an institution established by the S.C. Mission Conference of 1866 of the Methodist Episcopal Church for the education of African American ministers. In 1870 the Baker Biblical Institute merged with Claflin University. An act by the South Carolina General Assembly on March 12, 1872, designated the South Carolina State Agricultural and Mechanical Institute as a part of Claflin University. In 1896 the S.C. General Assembly passed an act of separation which severed the State Agricultural and Mechanical Institute from Claflin University and established a separate institution which eventually became South Carolina State University.

Since the administration of Dr. Webster, Claflin has been served by seven presidents: Dr. Edward Cooke (1872-1884); Dr. Lewis M. Dunton (1884-1922); Dr. Joseph B. Randolph (1922-1944); Dr. John J. Seabrook (1945-1955); Dr. Hubert V. Manning (1956-1984); Dr. Oscar A. Rogers, Jr. (1984-1994); and Dr. Henry N. Tisdale (1994-present).

Dr. Cooke left the presidency of Lawrence College to become the second president of Claflin. During his administration, a disastrous fire destroyed the Fisk Building, a proud monument designed by Robert Bates, recognized as the first certified Black Architect in the United States. In 1879 the first college class was graduated.

The Reverend Dr. Dunton, former vice president and development officer, was Claflin's third president. Dr. Dunton, a graduate of Syracuse University, was a practical educator. Under his administration the law department was set up under the Honorable J. J. Wright, a former Associate Justice of the S.C. Supreme Court; graduates were admitted to the South Carolina Bar; Claflin's property increased from six to 21 acres. After his retirement, Dr. Dunton deeded his personal home and six acres of land to Claflin.

Dr. Randolph, Claflin's fourth president, was the former president of Samuel Houston College and former dean of Wiley College. As a professional educator, he placed emphasis on a complete liberal arts education for the students who were inspired intellectually, culturally, and spiritually to launch into varied fields. The high school and upper grades were discontinued, but the first four elementary grades were retained for the teacher education program; this part of the program was later discontinued.

Dr. Seabrook, director of Morgan Christian Center, Baltimore, Maryland, became the fifth president of Claflin. Dr. Seabrook persuaded the South Carolina Annual Conference to increase substantially its annual giving to Claflin. Furthermore, he revitalized the interest of the New England Conference of the Methodist Church in the institution. The endowment was increased, and the curriculum was expanded. The college received its first accreditation by the Southern Association of Colleges and Schools in 1948.

Dr. Manning was appointed Claflin's sixth president. He was a Methodist minister and former associate professor at Claflin. Under Dr. Manning's leadership the faculty was strengthened, the endowment increased and the physical plant was significantly expanded.

Dr. Rogers, former dean of the Graduate School at Jackson State University, became Claflin's seventh president. Under his administration the enrollment and endowment increased, the Grace Thomas Kennedy building was constructed, the financial base of the college improved, and two capital campaigns were completed. Dr. Rogers also commissioned a master plan to guide campus development into the 21st century.

Dr. Tisdale, Claflin's eighth and current president, was former senior vice president and chief academic officer at Delaware State University. Dr. Tisdale brought a wealth of scholarly achievement and demonstrated leadership to the University. He declared academic excellence the number one priority for Claflin. The first steps, designed to enhance the academic environment, included the establishment of the Claflin Honors College and the Center for Excellence in Science and Mathematics, and the national accreditation of more than a dozen academic programs. Graduate programs established include the Master of Business Administration, the Master of Science in Biotechnology and the Master of Education. Facilities enhancements include construction of the Living and Learning Center, Legacy Plaza, the Student Residential Center, the Music Center, and the new University Chapel. Claflin University is now recognized as one of the premier liberal arts institutions in the nation.

Accreditation

Claflin University is accredited by the Commission on Colleges of the Southern Association of Colleges and Schools to award baccalaureate and masters degrees. Contact the Commission on Colleges at 1866 Southern Lane, Decatur, Georgia 30033-4097 or call 404-679-4500 for questions about the accreditation of Claflin University.

Specialized Accreditation

The University is approved by the University Senate of the United Methodist Church for listing as a United Methodist Church related institution. The programs in the School of Education are accredited by the National Association for the Accreditation of Teacher Education (NCATE) and by the South Carolina State Board of Education. The programs in the School of Business are accredited by the Accreditation Council for Business Schools and Programs (ACBSP). The Department of Music is an accredited institutional member of the National Association of Schools of Music (NASM). The Programs in Department of Chemistry are accredited by the American Chemical Society (ACS).

National Council for Accreditation of Teacher
Education
2010 Massachusetts Ave NW, Suite 500
Washington, DC 20036
Phone: (202) 466-7496
Fax: (202) 296-6620
www.ncate.org

Accreditation Council for Business Schools and
Programs
11520 West 119th Street
Overland Park, KS 66213
Phone: (913) 339-9356
Fax: (913) 339-6226
www.acbsp.org

National Association of Schools of Music
11250 Roger Bacon Drive, Suite 21
Reston, VA 20190-5248
Phone: (703) 437-0700
Fax: (703) 437-6312
<http://nasm.arts-accredit.org/>

American Chemical Society
1155 Sixteenth Street, NW
Washington, DC 20036
Phone: (202) 872-4600
Fax: (614) 447-3713
www.acs.org

Institutional Membership

AACTE	American Association of Colleges for Teacher Education
AACRAO	American Association of Collegiate Registrars and Admissions Officers
ACS	American Chemical Society
ACUPCC	American College & University President's Climate Commitment
ACE	American Council on Education
ACA	American Counseling Association
AERA	American Educational Research Association
AFA	American Forensics Association
APS	American Purchasing Society
ASM	American Society for Microbiology
ASCAP	American Society of Composers, Authors and Publishers
ACEI	Association for Childhood Education International
AIR	Association for Institutional Research
ASCD	Association for Supervision and Curriculum Development
ACUA	Association of College and University Auditors
AGB	Association of Governing Boards
BEA	Broadcast Education Association
CACRAO	Carolina Associations of Collegiate Registrars and Admissions Officers
CUPA-HR	College and University Professional Association for Human Resources
CASE	Council for Advancement and Support of Education
CASE	Council for Advancement and Support of Education
CHEA	Council for Higher Education Accreditation
COE	Council for Opportunity in Education
CAEP	Council for the Accreditation of Educator Preparation
CCAS	Council of Colleges of Arts and Sciences
CUR	Council on Undergraduate Research
DORA	Downtown Orangeburg Revitalization Association
IAMSCU	International Association of Methodist-Related Schools, Colleges and Universities
MAA	Mathematical Association of America
NAFEO	National Association for Equal Opportunity in Higher Education
NAEYC	National Association for the Education of Young Children
NAAAHP	National Association of African American Honors Programs
NACAS	National Association of College Auxiliary Services
NACUBO	National Association of Colleges and Universities Business Officers
NAEP	National Association of Educational Procurement
NAICU	National Association of Independent Colleges and Universities
NAPW	National Association of Professional Women
NASCUMC	National Association of Schools and Colleges of the United Methodist Church
NASFAA	National Association of Student Financial Aid Administrators
NACDRAO	National Associations Collegiate Deans Registrars and Admissions Officers
NCLP	National Clearinghouse for Leadership Programs

NCAA	National Collegiate Athletic Association
NCHC	National Collegiate Honors Council
NCATE	National Council for Accreditation of Teacher Education
NCTM	National Council of Teachers of Mathematics
NSBE	National Society of Black Engineers
NSPAA	National Sponsored Programs Administrators Alliance of HBCUs
FRN	New York University Faculty Resource Network
OCCC	Orangeburg County Chamber of Commerce
	Pi Lambda Theta International Honor Society of Educators
PRSA	Public Relations Society of America
SHRM	Society for Human Resource Management
SCAIR	South Carolina Association for Institutional Research
SCADC	South Carolina Association of Developing Colleges
SCASA	South Carolina Association of School Administrators/Dean's Alliance
SCATCE	South Carolina Association of Teachers & Colleges for Education
SCBA	South Carolina Broadcasters Association
SCCC	South Carolina Campus Compact
SCCC	South Carolina Chamber of Commerce
SCCPA	South Carolina College Personnel Association
SCCTM	South Carolina Council of Teachers of Mathematics
SCICU	South Carolina Independent Colleges & Universities
SCMEA	South Carolina Media Education Association
SCPA	South Carolina Press Association
SC2	South Carolina Science Council
SCTA	South Carolina Theatre Association
SEAHO	Southeastern Association of Housing Officers Carolina Housing
SETC	Southeastern Theatre Association/Conference
SACSCOC	Southern Association of Colleges and Schools Commission on Colleges
SACUBO	Southern Association of Colleges and Universities Business Officers
SACRAO	Southern Associations of Collegiate Registrars and Admissions Officers
SIAC	Southern Intercollegiate athletic Conference
SRHC	Southern Regional Honors Council
BTN	The Black Theatre Network
CB	The College Board
	The Leadership Alliance Consortium
NSLS	The National Society for Leadership and Success

Board of Trustees and Officers

Ms. Cynthia Anderson		Alexandria, VA
Mr. James A. Bennett	Chair of the Board	Columbia, SC
Mr. Michael R. Brenan		Columbia, SC
Mr. David R. Campbell		Columbia, SC
Mr. Keith M. Clarke	Chair: Buildings and Grounds Committee	Greenville, SC
Mr. Ted Creech	Secretary of the Board	Columbia, SC
Mr. Calvin H. Elam	Treasurer of the Board, Chair: Budget and Finance Committee	Irmo, SC
Dr. Willie L. Frazier		Augusta, GA
Dr. Belinda Gergel		Charleston, SC
Ms. Virginia Maxwell Grose		Columbia, SC
Mr. Moses L. Harvin	Chair: Nominating Committee	Rockledge, FL
Lt. Col. (Ret.) John O. Herring		College Park, GA
Mr. William H. Johnson		Virginia Beach, VA
Ms. Ruth M. Jordan		Charleston, SC
Mr. Daniel Lebish		Columbia, SC
Mr. James K. Lehman	Vice Chair of the Board, Chair: Audit Committee	Columbia, SC
Ms. Janice W. Marshall	Associate Secretary of the Board	Blythewood, SC
Ms. Hema Patel		Orangeburg, SC
Ms. Lessie Price		Aiken, SC
Rev. Dr. Albert Shuler		Holly Springs, NC
Ms. Joan Steward Stevens		Bowie, MD
Mr. Isaac Templeton, Jr.		Fort Washington, MD
Mr. William Thompson		Colorado Springs, CO
Ms. Nancy Wilson Young	Chair: Faculty and Curriculum Committee	South Miami, FL
Dr. Henry N. Tisdale,	Ex-Officio	Orangeburg, SC

Board of Visitors and Officers

Mrs. Thelma J. Hudson
Mr. Robert Bates
Mrs. Bessie H. Byrd

Chairperson
Vice Chairman
Secretary

TERM EXPIRES FALL MEETING 2016

Dr. Carolyn Briscoe
Ms. Alice Behlin, Chair-Recruitment Committee
Mr. Clyde A. Bess
Mrs. Bessie H. Byrd
Mrs. C. Donna Harris
Mrs. Thelma Hudson, Chair
Rev. George F. Manigo, Jr., Chair-Community Relations
Dr. Henry Marion
Ms. Carol C. Singletary
Mr. Paul A. Simmons
Dr. Leo F. Twiggs, Chair-Research Committee

Clemson, SC
Hampton, SC
Coward, SC
Orangeburg, SC
Charleston, SC
Walterboro, SC
Bamberg, SC
Elgin, SC
Columbia, SC
Columbia, SC
Orangeburg, SC

TERM EXPIRES FALL MEETING 2017

Rev. David L. Anderson
Mr. Robert Bates, Vice Chair/Chair-Fundraising Committee
Rev. Jack Gibson
Mr. Robert Scarborough
Mrs. Bernice Tribble
Mr. Reggie Vaughn

Columbia, SC
Chapin, SC
Orangeburg, SC
North, SC
Orangeburg, SC
Orangeburg, SC

TERM EXPIRES FALL MEETING 2018

Dr. Charles Atchison
Mr. Thomas Dandridge
Mrs. Clay Sandra Dash
Mrs. Theresa T. Davis
Rev. John W. Evans
Dr. Robert C. Gordon
Rep. Jerry N. Govan, Jr.
Dr. Leo Richardson
Mrs. Dorothy Smoak

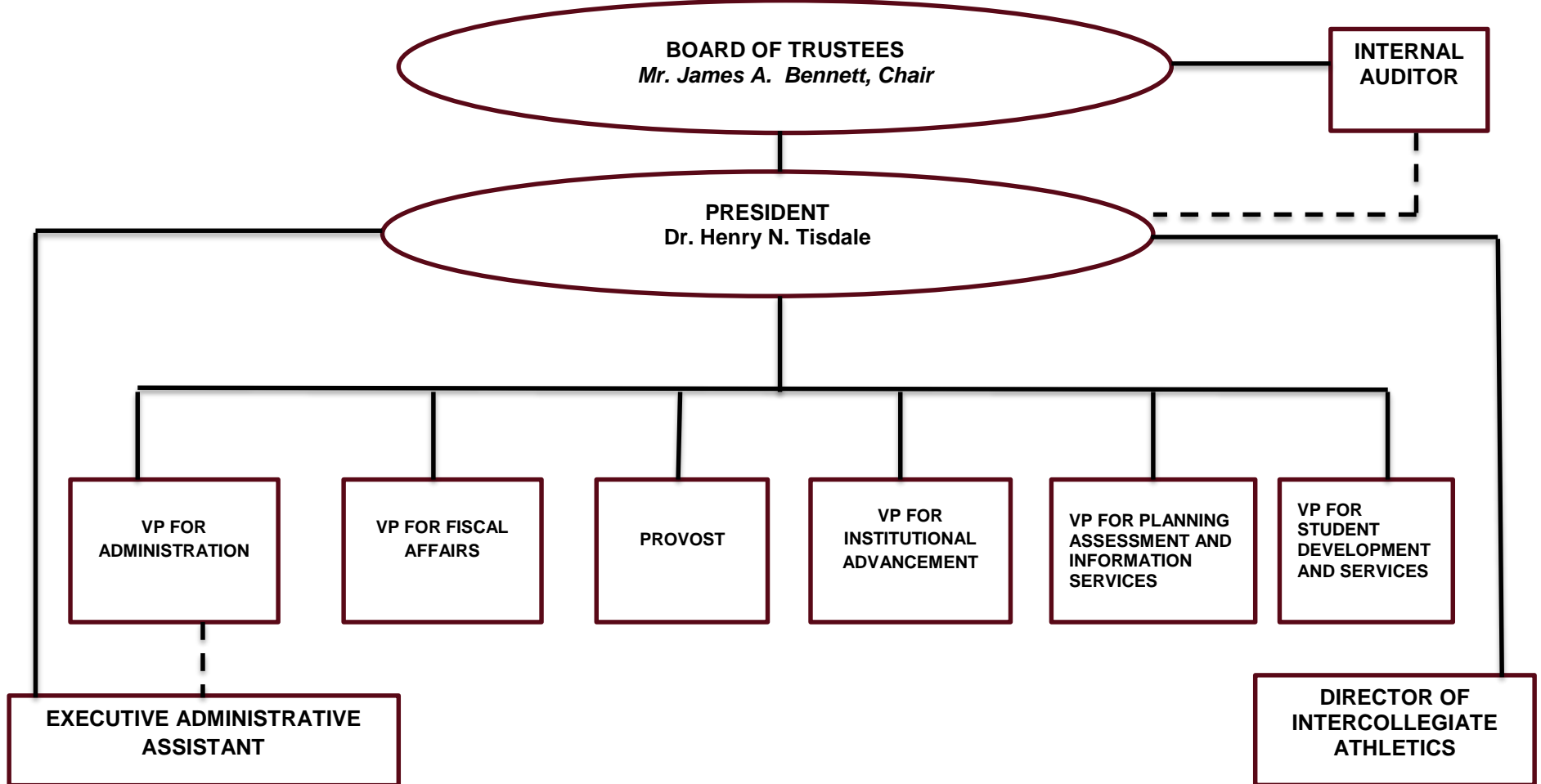
Spartanburg, SC
Orangeburg, SC
Orangeburg, SC
Orangeburg, SC
Cope, SC
Orangeburg, SC
Orangeburg, SC
Columbia, SC
Orangeburg, SC

HONORARY MEMBERS

Dr. Edna L. Calhoun
Mr. Dwayne A. Harper
Mrs. Earline Haywood-Ulmer, Chair-Nominations Committee

Bennettsville, SC
Columbia, SC
Orangeburg, SC

Organizational Chart



Programs of Study

MAJORS	DEGREE OFFERED ¹
African and African American Studies	BA
Art	BA
Art Education	BA
Biochemistry	BS
Bioinformatics	BS
Biology	BS
Biotechnology	BS, MS
Business Administration	BS, MBA
Chemistry	BS
Computer Engineering	BS
Computer Science	BS
Criminal Justice	BA
Curriculum and Instruction	MEd
Digital Design	BA
Early Childhood Education	BS
Elementary Education	BS
English	BA
English Education	BA
Environmental Science	BS
History	BA
Human Performance and Recreation	BS
Management	BS
Management Information Science	BS
Marketing	BS
Mass Communication	BA
Mathematics	BS
Mathematics Education	BS
Middle Level Education	BS
Music	BA
Music Education	BA
Organizational Management	BS
Philosophy and Religion	BA
Politics and Justice Studies	BA
Psychology	BA
Sociology	BA
Spanish	BA
Sport Management	BS

¹ BA: Bachelor of Arts | BS: Bachelor of Science | MS: Master of Science | MBA: Master of Business Administration | MEd: Master of Education

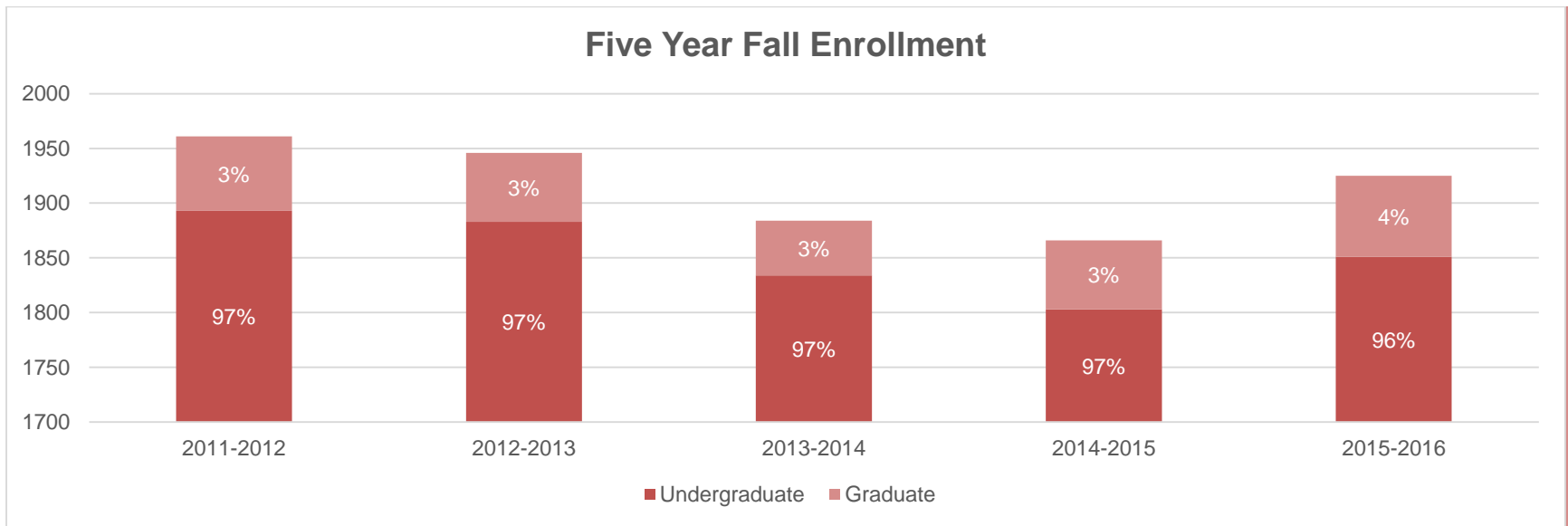
SECTION II: ENROLLMENT INFORMATION

Total Enrollment²																		
2014-2015										2015-2016³								
	Undergraduate					Graduate				Undergraduate					Graduate			
	Traditional	Non-Traditional	Non-Traditional Online	Non-Degree Seeking	Total	Traditional	Online	Non-Degree Seeking	Total	Traditional	Non-Traditional	Non-Traditional Online	Non-Degree Seeking	Total	Traditional	Online	Non-Degree Seeking	Total
Head Count																		
Fall	1524	208	52	19	1803	54	9	0	63	1604	154	86	7	1851	49	25	0	74
Spring	1466	183	54	20	1723	50	8	0	58	1534	128	85	25	1772	43	23	0	66
Summer	132	64	34	149	379	27	5	0	32									
FTE																		
Fall	1514	199	49	7	1768	45	8	0	53	1591	149	80	2	1822	39	24	0	63
Spring	1459	170	51	7	1687	38	6	0	44	1523	121	78	8	1730	38	18	0	57
Summer	116	60	33	132	341	12	2	0	15									

² FTE - Full Time Equivalent (full-time +1/3 part-time)

³ Summer data was not available at the time of this publication

Five Year Enrollment																
	2011-2012			2012-2013			2013-2014			2014-2015			2015-2016 ⁴			
Headcount																
	UG	GR	Total	UG	GR	Total	UG	GR	Total	UG	GR	Total	UG	GR	Total	
Fall	1893	68	1961	1883	63	1946	1834	50	1884	1803	63	1866	1851	74	1925	
Spring	1846	69	1915	1794	60	1854	1786	59	1845	1723	58	1781	1772	66	1838	
Summer	423	35	458	299	33	332	398	30	428	379	32	411				
FTE																
Fall	1828	52	1880	1848	52	1900	1790	43	1833	1768	53	1821	1822	63	1885	
Spring	1781	56	1837	1750	48	1798	1733	49	1782	1687	44	1731	1730	57	1787	
Summer	389	20	409	266	17	283	362	21	383	341	15	356				



⁴ Summer data was not available at the time of this publication

Admissions

Undergraduate Admissions - First-Time, Degree Seeking Students											
Fall	Applicants			Accepted			Enrolled			Percent Accepted	Enrolled as a percentage of Accepted
	Male	Female	Total	Male	Female	Total	Male	Female	Total		
2011	1615	2422	4037	631	947	1578	141	267	408	39%	26%
2012	1474	2880	4354	766	1524	2290	168	274	442	53%	19%
2013	1341	2740	4081	738	1612	2350	137	247	384	58%	16%
2014	1165	3992	5157	608	1522	2130	127	262	389	41%	18%
2015	1480	3938	5418	752	1487	2239	142	307	449	41%	20%
5 Yr. Avg.	1415	3194	4609	699	1418	2117	143	271	414	47%	20%

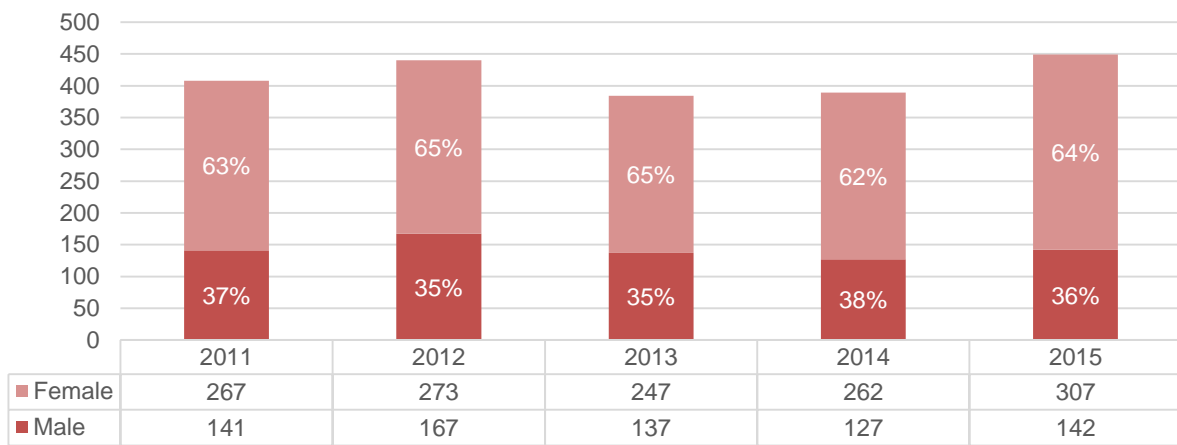
First-Time, Degree-Seeking Freshmen

	Fall 2014			Fall 2015			
	Male	Female	Total	Male	Female	Total	
Full-Time Traditional	124	260	384	142	307	449	
Full-Time Non-Traditional	3	2	5	0	0	0	
Total	127	262	389	142	307	449	
Nonresident alien	7	10	17	4%	1	2	3
Hispanic/Latino of any race	1	6	7	2%	1	3	4
American Indian or Alaska Native	2	3	5	1%	5	6	11
Asian	3	1	4	1%	6	2	8
Black or African American	112	242	354	91%	127	293	420
Native Hawaiian or Other Pacific Islander	0	0	0	0%	0	0	0
White	2	0	2	1%	2	0	2
Two or more races	0	0	0	0%	0	1	1
Race/ethnicity unknown	0	0	0	0%	0	0	0
Total	127	262	389	100%	142	307	449

First-Time Degree-Seeking Freshmen Placement Scores

	2011 FA		2012 FA		2013 FA		2014 FA		2015 FA	
	Mean	Median	Mean	Median	Mean	Median	Mean	Median	Mean	Median
SAT Math	440	425	447	430	424	420	403	390	413	410
SAT Verbal	436	430	432	420	424	410	399	390	410	410
ACT Composite	18	17	18	17	17	16	17	16	17	17
HS GPA	3.07	3.13	3.14	3.13	3.28	3.3	3.13	3.07	3.28	3.16

Distribution of First-Time, Full-Time, Degree-Seeking Freshmen by Gender



Five Year Enrollment of Undergraduate Entering Class

	2011 FA	2012 FA	2013 FA	2014 FA	2015 FA
Full-time					
First-time degree/certificate-seeking	408	440	384	389	449
Transfer-in degree/certificate-seeking	124	110	98	95	104
Part-time					
First-time degree/certificate-seeking		2			1
Transfer-in degree/certificate-seeking	1		1	4	2
Total	533	552	483	488	556

Geographic Distribution of First-Time Degree-Seeking Fall Freshmen

Country ⁵	2014	2015
Ghana	2	
India		1
Jamaica	4	4
Kenya	3	1
Nepal		5
Nigeria	2	4
Pakistan	2	
St. Vincent & Grenadines	1	
Senegal		1
Trinidad & Tobago	1	1
Vietnam	2	

State ⁶	2014	2015
Alabama		2
Arizona	1	
California	3	
Connecticut		1
District of Columbia	20	13
Florida	4	3
Georgia	21	22
Illinois	3	3
Indiana	1	
Kansas		1
Maryland	4	5
Michigan	5	5
Mississippi		1
Missouri	2	4
New Jersey	3	2
New York	5	4
North Carolina	4	12
Ohio		2
Pennsylvania	4	4
South Carolina	28	34
	7	7

Tennessee		1
Texas		1
Virginia	4	
Washington	1	

County ⁷	2014	2015
Abbeville		1
Aiken	5	6
Allendale	1	4
Anderson	2	8
Bamberg	1	6
Barnwell	2	4
Beaufort	2	7
Berkeley	10	17
Calhoun	2	5
Charleston	42	26
Cherokee	1	
Chester		3
Chesterfield	1	1
Clarendon	2	2
Colleton		2
Darlington	7	4
Dillon	1	4
Dorchester	4	3
Edgefield	1	
Fairfield	5	5
Florence	20	14
Georgetown	9	13
Greenville	5	8
Greenwood		1
Hampton	2	2
Horry	2	1
Jasper	4	5
Kershaw	2	4
Lancaster	4	1
Lee	2	3
Lexington	6	4
Marion	4	4
Marlboro	2	3

McCormick	1	
Newberry	1	
Orangeburg	49	37
Richland	36	57
Saluda	1	
Spartanburg	6	16
Sumter	24	33
Union		1
Williamsburg	16	25
York	2	7

⁵ Data represented does not include permanent residents or U.S. citizens

⁶ Data represented does not include Non-resident Aliens

⁷ South Carolina residents only

First-Time Degree-Seeking Freshmen Enrollment by Major

Majors	2011	2012	2013	2014	2015
School of Business	57	55	48	58	63
Business Administration	57	55	48	58	63
School of Education	51	66	62	64	58
Teacher Education	51	66	62	64	58
School of Humanities and Social Science	129	126	110	119	142
Art	9	10	14	4	10
English & Foreign Languages	3	6	6	8	2
History and Sociology	62	61	59	69	73
Mass Communications	35	36	13	25	36
Music	19	12	16	13	18
Religion and Philosophy	1	1	2		3
School of Natural Sciences and Mathematics	143	134	130	123	140
Biology	82	72	77	71	86
Chemistry	18	21	21	21	19
Math & Computer Science	39	37	32	29	32
Teacher Education	4	4		2	3
Professional and Continuing Studies	2	6	8	6	5
Business Administration		1	3	3	
History and Sociology	2	5	5	3	5
Undeclared	26	55	26	19	42

First-Time Degree-Seeking Freshmen Retention and Graduation Rates

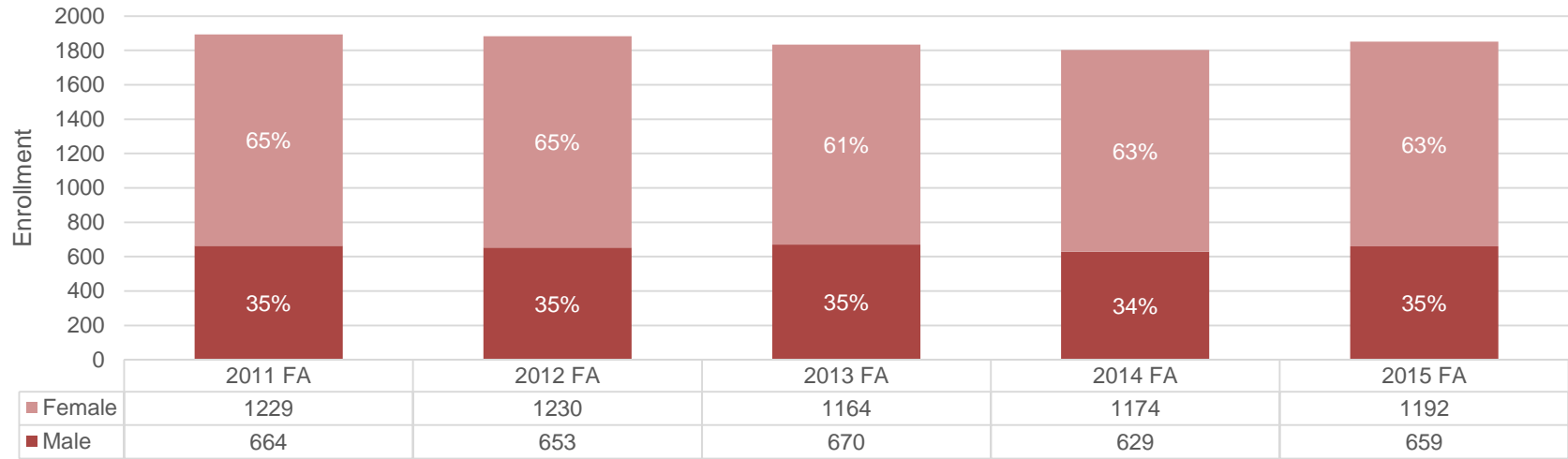
Entering first-time, full-time, degree-seeking freshmen (cohort)		Retention Rates	Final cohort after adjustable exclusions	Cumulative Graduation Rates		
Year	Number	First Year (Fall)	Revised Cohort	4 Years or Less	5 Years	6 Years
2002	344	78%	342	34%	48%	51%
2003	360	79%	340	29%	44%	47%
2004	366	79%	365	30%	43%	46%
2005	385	74%	380	29%	37%	40%
2006	398	70%	397	26%	42%	44%
2007	390	68%	390	29%	42%	44%
2008	463	72%	465	32%	45%	49%
2009	464	70%	466	26%	38%	42%
2010	423	77%	423	37%	49%	
2011	408	74%	408	38%		
2012	440	70%				
2013	384	71%				
2014	389	77%				

Undergraduate Enrollment

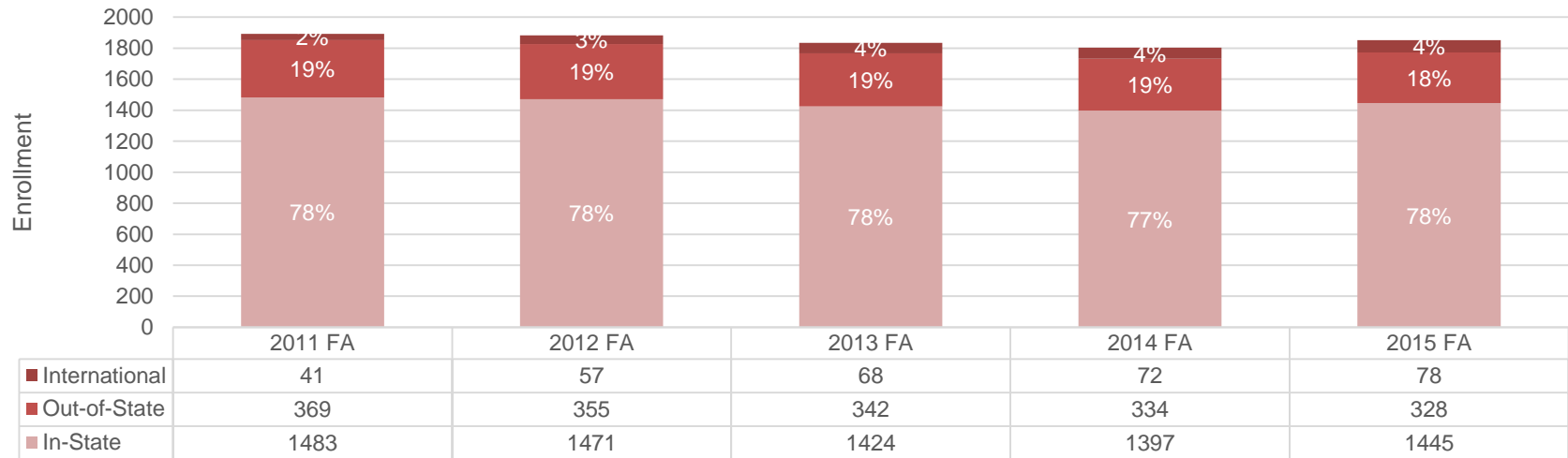
Undergraduate Enrollment by Ethnicity, Race and Gender

	2011 FA			2012 FA			2013 FA			2014 FA			2015 FA		
	M	F	%	M	F	%	M	F	%	M	F	%	M	F	%
Nonresident alien	23	18	2	30	27	3	37	31	4	34	32	4	23	23	2
Hispanic/Latino of any race	10	13	1	15	24	2	6	5	1	12	19	2	12	21	2
American Indian/Alaska Native	3	12	1	1	4	0	4	10	1	8	9	1	10	11	1
Asian	2	3	0	4	2	0	3	4	0	6	9	1	12	10	1
Black or African-American	605	1161	93	583	1157	92	594	1097	92	549	1094	91	585	1119	92
Native Hawaiian/Pacific	0	0	0	0	0	0	0	2	0	0	0	0	1	0	0
White	12	17	2	16	10	1	23	9	2	18	9	1	14	6	1
Two or more races	6	5	1	4	6	1	3	6	0	2	2	0	2	2	0
Race/ethnicity unknown	3	0	0	0	0	0	0	0	0	0	0	0	0	0	0
Total	664	1229	100	653	1230	100	670	1164	100	629	1174	100	659	1192	100

Undergraduate Enrollment by Gender



Undergraduate Enrollment by Residency



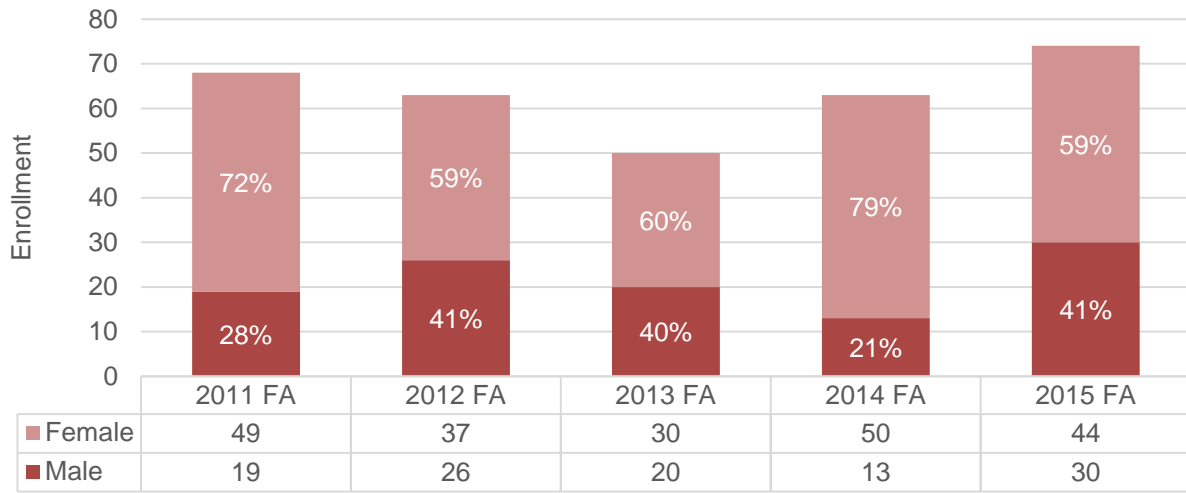
Five Year Non-Traditional Undergraduate Enrollment by Major

	2011	2012	2013	2014	2015
Continuing Education					
Criminal Justice				14	18
Organizational Management	24	37	27	53	55
Sociology/Criminal Justice Administration	32	70	72	52	34
Undeclared		2	1		
Degree Completion					
Criminal Justice					11
Organizational Management	113	87	66	34	17
Sociology/Criminal Justice Administration	115	81	89	55	19
Continuing Education (Online)					
Criminal Justice				25	29
Organizational Management				27	39
Sociology/Criminal Justice Administration					5
Degree Completion (Online)					
Criminal Justice					5
Organizational Management					6
Sociology/Criminal Justice Administration					2
Grand Total	284	277	255	260	240

Five Year Enrollment of Graduate Students

	2011		2012		2013		2014		2015	
	Male	Female	Male	Female	Male	Female	Male	Female	Male	Female
American Indian or Alaska Native						2		3		
Asian		2	2	2	1	1		1	2	1
Black or African American	16	40	16	31	12	24	10	42	15	38
Nonresident Alien	3	4	7	4	7	3	1	3	10	3
Race and Ethnicity unknown								1		
Two or more races		1								1
White		2	1				2		3	1
Total	19	49	26	37	20	30	13	50	30	44

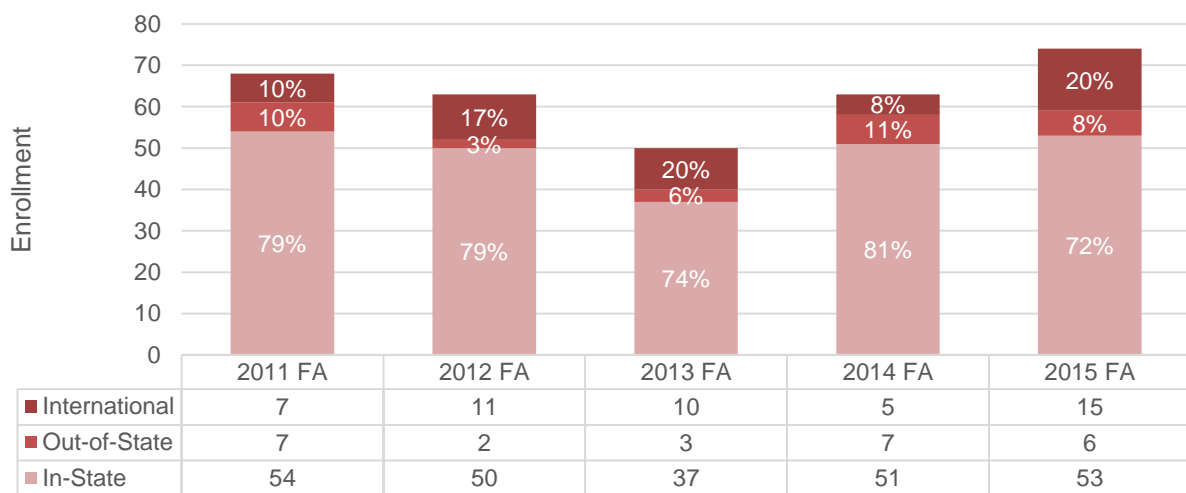
Five Year Enrollment of Graduate Students by Gender



Five Year Enrollment of Graduate Students by Major

	2011	2012	2013	2014	2015
Biotechnology	17	17	16	20	14
Business Administration	49	46	33	35	35
Business Administration (Online)				8	9
Curriculum and Instruction					16
Undeclared	2		1		
Grand Total	68	63	50	63	74

Five Year Enrollment of Graduate Students by Residency



Geographic Distribution of Graduates

Country	2014 FA	2015 FA
Bahamas		1
India		6
Nepal		3
Nigeria	4	5
Sri Lanka	1	

State	2014 FA	2015 FA
Florida	1	
Georgia	1	1
Indiana	1	1
Maryland	1	1
Michigan	1	1
Missouri	1	1
North Carolina	1	1
South Carolina	51	53

County	2014 FA	2015 FA
Anderson	1	
Bamberg	3	
Barnwell	1	
Berkeley		1
Calhoun	1	
Charleston	1	2
Cherokee		1
Colleton	1	
Dorchester	2	2
Florence	1	
Georgetown	1	1
Hampton		1
Lee		1
Lexington	1	1
Orangeburg	25	27
Pickens	1	1
Richland	7	10
Sumter	1	1
York	1	
Unknown	3	4

SECTION III: DEGREE COMPLETION

Majors by School and Department	2011-12	2012-13	2013-14	2014-15	2015-16 ⁸
School of Business	79	87	69	82	56
Business Administration	79	87	69	82	56
Business Administration	21	28	26	35	17
Business Administration (MBA)	28	30	19	14	14
Management	16	15	14	22	17
Marketing	14	14	10	11	8
School of Education	26	44	29	46	39
Teacher Education	26	44	29	46	39
Early Childhood Education		4	4	6	4
Educational Studies (M.Ed.)	5				
Elementary Education	1	9	6	8	6
Human Performance and Recreation	6	12	10	12	15
Middle Level Education	3	5	3	1	2
Sport Management	11	14	6	19	12
School of Humanities and Social Science	96	102	98	138	111
Art	4	1	3	4	4
Art Education	1				
Digital Design	3	1	1	2	3
Studio Art			2	2	1
English & Foreign Languages	17	13	13	14	3
English	15	10	13	14	3
English Education		3			
American Studies	2				
History and Sociology	47	49	50	74	68
African and African American Studies		1	1		
History	4		3	4	6
Politics and Justice Studies	2	4	19	26	29
Psychology				1	7
Sociology	41	44	27	43	26
Mass Communications	19	27	25	38	29
Mass Communications	19	27	25	38	29
Music	4	9	6	8	7
Music	4	7	4	8	7
Music Education		2	2		
Religion and Philosophy	5	3	1		
Philosophy and Religion	5	3	1		

⁸ Data presented only encompasses December graduates, subject to change.

School of Natural Sciences and Mathematics	60	53	60	65	72
Biology	34	33	41	44	46
Bioinformatics	1				
Biology	26	21	34	31	39
Biotechnology		3	1	2	2
Biotechnology (M.S.)	7	9	6	11	5
Chemistry	9	11	5	10	10
Biochemistry	9	8	3	7	5
Chemistry		3	1	1	3
Environmental Science			1	2	2
Math & Computer Science	15	9	13	11	16
Computer Engineering	2	3	2	3	3
Computer Science	1	1	3	2	5
Management Information Science	5	2	6	1	3
Mathematics	5	2	2	5	1
Mathematics (Applied Mathematics Track)	2	1			4
Teacher Education	2		1		
Mathematics Education	2		1		
Professional and Continuing Studies	98	86	80	65	71
Business Administration	38	44	40	30	29
Organizational Management	38	44	40	30	29
History and Sociology	60	42	40	35	42
Sociology/Criminal Justice Administration	60	42	40	35	42
Grand Total	359	372	336	396	349

SECTION IV: INSTRUCTIONAL STAFF

Demographics										
	Fall 2011		Fall 2012		Fall 2013		Fall 2014		Fall 2015	
Full-Time	117	74	121	79	113	70	120	71%	121	70%
Part-Time	41	26	32	21	49	30	50	29%	52	30%
Total	158	100	153	100	162	100	170	100%	173	100%
Full-Time Faculty										
Gender										
Male	69	59	69	57	67	59	68	40%	67	55%
Female	48	41	52	43	46	41	52	31%	54	45%
Total	117	100	121	100	113	100	120	71%	121	100%
Race and Ethnicity										
Nonresident Alien	9	8	11	9	8	7	9	8%	6	5%
Hispanic/Latino of any race	4	3	4	3	5	4	4	3%	6	5%
American Indian/Alaskan Native	1	1	1	0	1	1	2	2%	1	1%
Asian	20	17	21	17	24	21	26	22%	26	21%
Black/African American	57	49	56	46	46	41	50	42%	50	41%
Native Hawaiian/ Other Pacific Islander	0	0	0	0	0	0	0	0%	0	0%
White	24	21	27	22	28	25	29	24%	32	26%
Two or more races	2	2	1	1	1	1	0	0%	0	0%
Race/ethnicity unknown	0	0	0	0	0	0	0	0%	0	0%
Rank										
Professor	18	15	19	16	19	17	14	12%	20	17%
Associate	22	19	22	18	24	21	24	20%	32	26%
Assistant	57	49	63	52	57	50	58	48%	47	39%
Instructor	18	15	16	13	12	11	23	19%	21	17%
Lecturer	2	2	1	1	1	1	1	1%	1	1%
Tenureship										
Tenured	34	29	38	31	35	31	32	27%	32	26%
On tenure track	57	49	58	48	52	46	48	40%	39	32%
Not on tenure track	26	22	25	21	26	23	40	33%	50	41%
Degree Status										
Terminal Degree	91	78	97	80	92	81	100	83%	96	79%
Master's Degree	26	22	24	20	21	19	20	17%	25	21%

Student - Faculty Ratio⁹

	Fall 2011	Fall 2012	Fall 2013	Fall 2014	Fall 2015
Student FTE	1880	1900	1833	1768	1822
Faculty FTE	131	132	130	136	138
Student-Faculty Ratio	14:1	14:1	14:1	13:1	13:1

⁹ The ratio of FTE students to FTE instructional staff, i.e., students divided by staff.

SECTION V: FINANCIAL AID

Number of Students Awarded Financial Aid¹⁰

Type of Funding	2010-2011	2011-2012	2012-2013	2013-2014	2014-2015
Federal Work-Study	204, 10.8%	191, 9.7%	146, 7.5%	206, 10.9%	221, 11.8%
Guaranteed Student Loans	1642, 86.7%	1773, 90.4%	1699, 87.3%	1481, 78.6%	1705, 91.4%
Palmetto Fellow	6, 0.3%	4, 0.2%	4, 0.2%	3, 0.2%	3, 0.2%
Palmetto Life	382, 20.2%	412, 21%	412, 21.2%	470, 24.9%	428, 22.9%
Pell Grants	1442, 76.2%	1507, 76.8%	1421, 73%	1537, 81.6%	1532, 82.1%
Scholarships - External	526, 27.8%	471, 24%	502, 25.8%	513, 27.2%	613, 32.9%
Scholarships - Internal	970, 51.2%	964, 49.2%	997, 51.2%	1003, 53.2%	1042, 55.8%
SC Hope Scholarship	59, 3.1%	65, 3.3%	78, 4%	74, 3.9%	81, 4.3%
SC Tuition Grant	1033, 54.6%	1088, 55.5%	1123, 57.7%	1130, 60%	1044, 55.9%
Alternative/Private Loans	62, 3.3%	59, 3%	56, 2.9%	56, 3%	53, 2.8%
Supplemental/Plus Loans	359, 19%	354, 18.1%	175, 9%	243, 12.9%	284, 15.2%

Amount of Awarded Financial Aid

Type of Funding	2010-2011	2011-2012	2012-2013	2013-2014	2014-2015
Federal Work-Study	\$214,911	\$253,904	\$194,622	\$217,635	\$267,662
Guaranteed Student Loans	\$13,175,130	\$13,336,493	\$14,527,530	\$14,719,907	\$14,435,990
Palmetto Fellow	\$48,750	\$37,500	\$30,100	\$30,000	\$30,000
Palmetto Life	\$1,937,640	\$2,146,051	\$2,073,760	\$2,325,000	\$2,190,597
Pell Grants	\$6,502,386	\$6,646,286	\$6,318,390	\$6,578,390	\$6,767,459
Scholarships - External	\$1,716,001	\$1,576,256	\$1,671,099	\$1,800,150	\$2,193,710
Scholarships - Internal	\$6,388,210	\$6,675,588	\$7,314,613	\$7,117,152	\$6,810,924
SC Hope Scholarship	\$154,000	\$177,800	\$203,000	\$210,000	\$184,125
SC Tuition Grant	\$2,548,632	\$2,503,635	\$2,956,893	\$2,944,346	\$2,831,314
Alternative/Private Loans	\$546,411	\$536,862	\$534,599	\$569,389	\$566,955
Supplemental/Plus Loans	\$2,873,824	\$3,444,040	\$1,935,586	\$2,858,959	\$3,569,304
TOTAL	\$36,105,895	\$37,334,415	\$37,760,192	\$39,370,928	\$39,848,040

All amounts rounded to the nearest dollar

¹⁰ Number of students being accounted for receiving aid as a percentage of total enrollment for each respective year are not mutually exclusive within the types of funding